

Actin (Alpha-Actin) Antibody

Rabbit mAb

Catalog # AP90211

Product Information

Application	WB, IHC, IF, FC, ICC, IP, IHF
Primary Accession	P68133
Reactivity	Rat, Human, Mouse
Clonality	Monoclonal
Other Names	ACTA, ACTA1, ACTS, Actin, alpha skeletal muscle, Alpha-actin 1
Isotype	Rabbit IgG
Host	Rabbit
Calculated MW	42051

Additional Information

Dilution	WB 1:1000~1:2000 IHC 1:50~1:200 ICC/IF 1:50~1:200 IP 1:50 FC 1:50
Purification	Affinity-chromatography
Immunogen	A synthesized peptide derived from human Actin (Alpha-Actin)
Description	Actins are highly conserved proteins that are involved in various types of cell motility and are ubiquitously expressed in all eukaryotic cells.
Storage Condition and Buffer	Rabbit IgG in phosphate buffered saline , pH 7.4, 150mM NaCl, 0.02% sodium azide and 50% glycerol. Store at +4°C short term. Store at -20°C long term. Avoid freeze / thaw cycle.

Protein Information

Name	ACTA1
Synonyms	ACTA
Function	Actins are highly conserved proteins that are involved in various types of cell motility and are ubiquitously expressed in all eukaryotic cells.
Cellular Location	Cytoplasm, cytoskeleton.

Images

Western blot analysis of Actin (Alpha-Actin) expression in (1) A431 cell lysate; (2) MCF-7 cell lysate.

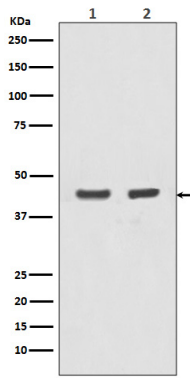


Image not found : 202311/AP90211-IHC.jpg

Immunohistochemical analysis of paraffin-embedded mouse muscle, using Actin (Alpha-Actin) Antibody.

Image not found : 202311/AP90211-IF.jpg

Immunofluorescent analysis of Hela cells, using Actin (Alpha-Actin) Antibody .

Please note: All products are 'FOR RESEARCH USE ONLY. NOT FOR USE IN DIAGNOSTIC OR THERAPEUTIC PROCEDURES'.