

CDK1 Antibody

Rabbit mAb

Catalog # AP90226

Product Information

Application	WB, IHC, IF, ICC, IP, IHF
Primary Accession	P06493
Reactivity	Human
Clonality	Monoclonal
Other Names	CDC2; CDC28A; P34CDC2; CDK1;
Isotype	Rabbit IgG
Host	Rabbit
Calculated MW	34095

Additional Information

Dilution	WB 1:500~1:2000 IHC 1:50~1:200 ICC/IF 1:50~1:200 IP 1:50
Purification	Affinity-chromatography
Immunogen	A synthesized peptide derived from human CDK1
Description	The cell division control protein cdc2, also known as cyclin-dependent kinase 1 (Cdk1) or p34/cdk1, plays a key role in the control of the eukaryotic cell cycle, where it is required for entry into S-phase and mitosis. Cdc2 exists as a complex with both cyclin A and cyclin B. The best characterized of these associations is the Cdc2 p34 cyclin B complex, which is required for the G2 to M phase transition. Activation of Cdc2 is controlled at several steps including cyclin binding and phosphorylation of threonine 161.
Storage Condition and Buffer	Rabbit IgG in phosphate buffered saline , pH 7.4, 150mM NaCl, 0.02% sodium azide and 50% glycerol. Store at +4°C short term. Store at -20°C long term. Avoid freeze / thaw cycle.

Protein Information

Name	CDK1
Synonyms	CDC2, CDC28A, CDKN1, P34CDC2
Function	Plays a key role in the control of the eukaryotic cell cycle by modulating the centrosome cycle as well as mitotic onset; promotes G2-M transition via association with multiple interphase cyclins (PubMed: 16407259 , PubMed: 16933150 , PubMed: 17459720 , PubMed: 18356527 , PubMed: 19509060 , PubMed: 19917720 , PubMed: 20171170 , PubMed: 20935635 , PubMed: 20937773 , PubMed: 21063390 , PubMed: 2188730 , PubMed: 23355470 , PubMed: 2344612 , PubMed: 23601106 , PubMed: 23602554 , PubMed: 25556658 , PubMed: 26829474 , PubMed: 27814491 , PubMed: 30139873 , PubMed: 30704899). Phosphorylates PARVA/actopaxin, APC, AMPH, APC, BARD1, Bcl-xL/BCL2L1, BRCA2, CALD1, CASP8, CDC7, CDC20,

CDC25A, CDC25C, CC2D1A, CENPA, CSNK2 proteins/CKII, FZR1/CDH1, CDK7, CEBPB, CHAMP1, DMD/dystrophin, EEF1 proteins/EF-1, EZH2, KIF11/EG5, EGFR, FANCG, FOS, GFAP, GOLGA2/GM130, GRASP1, UBE2A/hHR6A, HIST1H1 proteins/histone H1, HMGA1, HIVEP3/KRC, KAT5, LMNA, LMNB, LBR, MKI67, LATS1, MAP1B, MAP4, MARCKS, MCM2, MCM4, MKLP1, MLST8, MYB, NEFH, NFIC, NPC/nuclear pore complex, PITPNM1/NIR2, NPM1, NCL, NUCKS1, NPM1/numatrin, ORC1, PRKAR2A, EEF1E1/p18, EIF3F/p47, p53/TP53, NONO/p54NRB, PAPOLA, PLEC/plectin, RB1, TPPP, UL40/R2, RAB4A, RAP1GAP, RBBP8/CtIP, RCC1, RPS6KB1/S6K1, KHDRBS1/SAM68, ESPL1, SKI, BIRC5/survivin, STIP1, TEX14, beta-tubulins, MAPT/TAU, NEDD1, VIM/vimentin, TK1, FOXO1, RUNX1/AML1, SAMHD1, SIRT2, CGAS and RUNX2 (PubMed:[16407259](#), PubMed:[16933150](#), PubMed:[17459720](#), PubMed:[18356527](#), PubMed:[19202191](#), PubMed:[19509060](#), PubMed:[19917720](#), PubMed:[20171170](#), PubMed:[20935635](#), PubMed:[20937773](#), PubMed:[21063390](#), PubMed:[2188730](#), PubMed:[23355470](#), PubMed:[2344612](#), PubMed:[23601106](#), PubMed:[23602554](#), PubMed:[25012651](#), PubMed:[25556658](#), PubMed:[26829474](#), PubMed:[27814491](#), PubMed:[30704899](#), PubMed:[32351706](#), PubMed:[34741373](#)).

CDK1/CDC2-cyclin-B controls pronuclear union in interphase fertilized eggs (PubMed:[18480403](#), PubMed:[20360007](#)). Essential for early stages of embryonic development (PubMed:[18480403](#), PubMed:[20360007](#)). During G2 and early mitosis, CDC25A/B/C-mediated dephosphorylation activates CDK1/cyclin complexes which phosphorylate several substrates that trigger at least centrosome separation, Golgi dynamics, nuclear envelope breakdown and chromosome condensation (PubMed:[18480403](#), PubMed:[20360007](#), PubMed:[2188730](#), PubMed:[2344612](#), PubMed:[30139873](#)). Once chromosomes are condensed and aligned at the metaphase plate, CDK1 activity is switched off by WEE1- and PKMYT1-mediated phosphorylation to allow sister chromatid separation, chromosome decondensation, reformation of the nuclear envelope and cytokinesis (PubMed:[18480403](#), PubMed:[20360007](#)). Phosphorylates KRT5 during prometaphase and metaphase (By similarity). Inactivated by PKR/EIF2AK2- and WEE1-mediated phosphorylation upon DNA damage to stop cell cycle and genome replication at the G2 checkpoint thus facilitating DNA repair (PubMed:[20360007](#)). Reactivated after successful DNA repair through WIP1-dependent signaling leading to CDC25A/B/C-mediated dephosphorylation and restoring cell cycle progression (PubMed:[20395957](#)). Catalyzes lamin (LMNA, LMNB1 and LMNB2) phosphorylation at the onset of mitosis, promoting nuclear envelope breakdown (PubMed:[2188730](#), PubMed:[2344612](#), PubMed:[37788673](#)). In proliferating cells, CDK1-mediated FOXO1 phosphorylation at the G2-M phase represses FOXO1 interaction with 14-3-3 proteins and thereby promotes FOXO1 nuclear accumulation and transcription factor activity, leading to cell death of postmitotic neurons (PubMed:[18356527](#)). The phosphorylation of beta-tubulins regulates microtubule dynamics during mitosis (PubMed:[16371510](#)). NEDD1 phosphorylation promotes PLK1-mediated NEDD1 phosphorylation and subsequent targeting of the gamma-tubulin ring complex (gTuRC) to the centrosome, an important step for spindle formation (PubMed:[19509060](#)). In addition, CC2D1A phosphorylation regulates CC2D1A spindle pole localization and association with SCC1/RAD21 and centriole cohesion during mitosis (PubMed:[20171170](#)). The phosphorylation of Bcl-xL/BCL2L1 after prolonged G2 arrest upon DNA damage triggers apoptosis (PubMed:[19917720](#)). In contrast, CASP8 phosphorylation during mitosis prevents its activation by proteolysis and subsequent apoptosis (PubMed:[20937773](#)). This phosphorylation occurs in cancer cell lines, as well as in primary breast tissues and lymphocytes (PubMed:[20937773](#)). EZH2 phosphorylation promotes H3K27me3 maintenance and epigenetic gene silencing (PubMed:[20935635](#)). CALD1 phosphorylation promotes Schwann cell migration during peripheral nerve regeneration (By similarity). CDK1-cyclin-B complex phosphorylates NCKAP5L and mediates its dissociation from centrosomes during mitosis (PubMed:[26549230](#)). Regulates the amplitude of

the cyclic expression of the core clock gene BMAL1 by phosphorylating its transcriptional repressor NR1D1, and this phosphorylation is necessary for SCF(FBXW7)- mediated ubiquitination and proteasomal degradation of NR1D1 (PubMed:[27238018](#)). Phosphorylates EML3 at 'Thr-881' which is essential for its interaction with HAUS augmin-like complex and TUBG1 (PubMed:[30723163](#)). Phosphorylates CGAS during mitosis, leading to its inhibition, thereby preventing CGAS activation by self DNA during mitosis (PubMed:[32351706](#)). Phosphorylates SKA3 on multiple sites during mitosis which promotes SKA3 binding to the NDC80 complex and anchoring of the SKA complex to kinetochores, to enable stable attachment of mitotic spindle microtubules to kinetochores (PubMed:[28479321](#), PubMed:[31804178](#), PubMed:[32491969](#)).

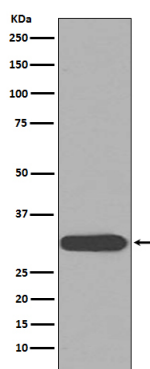
Cellular Location

Nucleus {ECO:0000250|UniProtKB:P11440}. Cytoplasm {ECO:0000250|UniProtKB:P11440}. Mitochondrion. Cytoplasm, cytoskeleton, microtubule organizing center, centrosome. Cytoplasm, cytoskeleton, spindle. Note=Cytoplasmic during the interphase Colocalizes with SIRT2 on centrosome during prophase and on spindle fibers during metaphase of the mitotic cell cycle. Reversibly translocated from cytoplasm to nucleus when phosphorylated before G2-M transition when associated with cyclin-B1. Accumulates in mitochondria in G2-arrested cells upon DNA-damage

Tissue Location

[Isoform 2]: Found in breast cancer tissues.

Images



Western blot analysis of CDK1 expression in HeLa cell lysate.

Image not found : 202311/AP90226-IHC.jpg

Immunohistochemical analysis of paraffin-embedded human colon, using CDK1 Antibody.

Image not found : 202311/AP90226-IF.jpg

Immunofluorescent analysis of Hela cells, using CDK1 Antibody .

Please note: All products are 'FOR RESEARCH USE ONLY. NOT FOR USE IN DIAGNOSTIC OR THERAPEUTIC PROCEDURES'.