

# CLGN Antibody (Center)

Affinity Purified Rabbit Polyclonal Antibody (Pab)

Catalog # AP9022c

## Product Information

---

<b>Application</b>	WB, IHC-P, FC, E
<b>Primary Accession</b>	<a href="#">O14967</a>
<b>Reactivity</b>	Human
<b>Host</b>	Rabbit
<b>Clonality</b>	Polyclonal
<b>Isotype</b>	Rabbit IgG
<b>Clone Names</b>	RB23137
<b>Calculated MW</b>	70039
<b>Antigen Region</b>	309-336

## Additional Information

---

<b>Gene ID</b>	1047
<b>Other Names</b>	Calmegin, CLGN
<b>Target/Specificity</b>	This CLGN antibody is generated from rabbits immunized with a KLH conjugated synthetic peptide between 309-336 amino acids from the Central region of human CLGN.
<b>Dilution</b>	WB~~1:1000 IHC-P~~1:100~500 FC~~1:10~50 E~~Use at an assay dependent concentration.
<b>Format</b>	Purified polyclonal antibody supplied in PBS with 0.09% (W/V) sodium azide. This antibody is purified through a protein A column, followed by peptide affinity purification.
<b>Storage</b>	Maintain refrigerated at 2-8°C for up to 2 weeks. For long term storage store at -20°C in small aliquots to prevent freeze-thaw cycles.
<b>Precautions</b>	CLGN Antibody (Center) is for research use only and not for use in diagnostic or therapeutic procedures.

## Protein Information

---

<b>Name</b>	CLGN
<b>Function</b>	Functions during spermatogenesis as a chaperone for a range of client proteins that are important for sperm adhesion onto the egg zona pellucida and for subsequent penetration of the zona pellucida. Required for normal sperm migration from the uterus into the oviduct. Required for normal male

fertility. Binds calcium ions (By similarity).

**Cellular Location**

Endoplasmic reticulum membrane; Single-pass type I membrane protein

**Tissue Location**

Detected in testis (at protein level). Detected in testis.

## Background

---

CLGN probably plays an important role in spermatogenesis. Binds calcium ions.

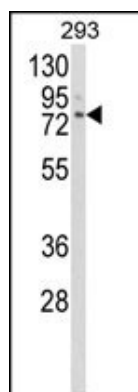
## References

---

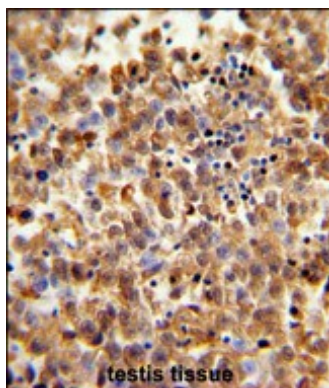
van Lith M., et.al., Mol. Biol. Cell 18:2795-2804(2007).

## Images

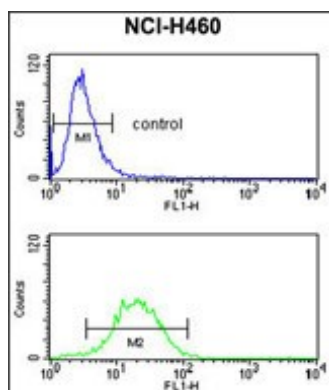
---



Western blot analysis of CLGN Antibody (Center) (Cat. #AP9022c) in 293 cell line lysates (35ug/lane). CLGN (arrow) was detected using the purified Pab.



Formalin-fixed and paraffin-embedded human testis tissue reacted with CLGN Antibody (Center), which was peroxidase-conjugated to the secondary antibody, followed by DAB staining. This data demonstrates the use of this antibody for immunohistochemistry; clinical relevance has not been evaluated.



CLGN Antibody (Center) (Cat. #AP9022c) flow cytometry analysis of NCI-H460 cells (bottom histogram) compared to a negative control cell (top histogram). FITC-conjugated goat-anti-rabbit secondary antibodies were used for the analysis.

## Citations

---

- [Quantitative Proteomics of Human Fibroblasts with I1061T Mutation in Niemann-Pick C1 \(NPC1\) Protein Provides Insights into the Disease Pathogenesis.](#)

Please note: All products are 'FOR RESEARCH USE ONLY. NOT FOR USE IN DIAGNOSTIC OR THERAPEUTIC PROCEDURES'.