

Phospho-Histone H3 (S10) Antibody

Rabbit mAb

Catalog # AP90233

Product Information

Application	WB, IHC, IF, ICC, IP, IHF
Primary Accession	P68431
Reactivity	Rat, Human, Mouse
Clonality	Monoclonal
Other Names	H3 histone, family 3A; H3 histone, family 3B (H3.3B); H3.3A; H3.3B; H33; H3F3; H3F3A; H3F3B; Histone H3.3;
Isotype	Rabbit IgG
Host	Rabbit
Calculated MW	15404

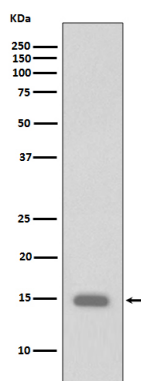
Additional Information

Dilution	WB 1:1000~1:2000 IHC 1:50~1:200 ICC/IF 1:50~1:200 IP 1:50
Purification	Affinity-chromatography
Immunogen	A synthesized peptide derived from human Phospho-Histone H3 (S10)
Description	Variant histone H3 which replaces conventional H3 in a wide range of nucleosomes in active genes. Constitutes the predominant form of histone H3 in non-dividing cells and is incorporated into chromatin independently of DNA synthesis. Deposited at sites of nucleosomal displacement throughout transcribed genes, suggesting that it represents an epigenetic imprint of transcriptionally active chromatin. Nucleosomes wrap and compact DNA into chromatin, limiting DNA accessibility to the cellular machineries which require DNA as a template.
Storage Condition and Buffer	Rabbit IgG in phosphate buffered saline , pH 7.4, 150mM NaCl, 0.02% sodium azide and 50% glycerol. Store at +4°C short term. Store at -20°C long term. Avoid freeze / thaw cycle.

Protein Information

Name	H3C1 (HGNC:4766)
Synonyms	H3FA, HIST1H3A
Function	Core component of nucleosome. Nucleosomes wrap and compact DNA into chromatin, limiting DNA accessibility to the cellular machineries which require DNA as a template. Histones thereby play a central role in transcription regulation, DNA repair, DNA replication and chromosomal stability. DNA accessibility is regulated via a complex set of post-translational modifications of histones, also called histone code, and nucleosome remodeling.
Cellular Location	Nucleus. Chromosome.

Images



Western blot analysis of Phospho-Histone H3 (S10) expression in HeLa cell lysate treated with calyculin A.

Image not found : 202311/AP90233-IHC.jpg

Immunohistochemical analysis of paraffin-embedded mouse liver, using Phospho-Histone H3 (S10) Antibody.

Please note: All products are 'FOR RESEARCH USE ONLY. NOT FOR USE IN DIAGNOSTIC OR THERAPEUTIC PROCEDURES'.