

TRAM2 Antibody

Rabbit mAb

Catalog # AP90237

Product Information

Application	WB
Primary Accession	Q15035
Reactivity	Rat, Human, Mouse
Clonality	Monoclonal
Other Names	KIAA0057;TRAM like protein;Tram2;Translocating chain associating membrane protein 2;Translocation associated membrane protein 2
Isotype	Rabbit IgG
Host	Rabbit
Calculated MW	43328

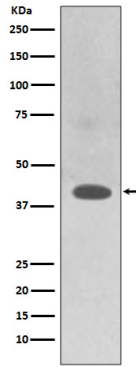
Additional Information

Dilution	WB 1:500~1:2000
Purification	Affinity-chromatography
Immunogen	A synthesized peptide derived from human TRAM2
Description	TRAM2 is necessary for collagen type I synthesis. May couple the activity of the ER Ca ²⁺ pump SERCA2B with the activity of the translocon. This coupling may increase the local Ca ²⁺ concentration at the site of collagen synthesis, and a high Ca ²⁺ concentration may be necessary for the function of molecular chaperones involved in collagen folding.
Storage Condition and Buffer	Rabbit IgG in phosphate buffered saline , pH 7.4, 150mM NaCl, 0.02% sodium azide and 50% glycerol. Store at +4°C short term. Store at -20°C long term. Avoid freeze / thaw cycle.

Protein Information

Name	TRAM2
Synonyms	KIAA0057
Function	Necessary for collagen type I synthesis. May couple the activity of the ER Ca(2+) pump SERCA2B with the activity of the translocon. This coupling may increase the local Ca(2+) concentration at the site of collagen synthesis, and a high Ca(2+) concentration may be necessary for the function of molecular chaperones involved in collagen folding. Required for proper insertion of the first transmembrane helix N-terminus of TM4SF20 into the ER lumen, may act as a ceramide sensor for regulated alternative translocation (RAT) (PubMed: 27499293).
Cellular Location	Membrane; Multi-pass membrane protein

Images



Western blot analysis of TRAM2 expression in HepG2 cell lysate.

Please note: All products are 'FOR RESEARCH USE ONLY. NOT FOR USE IN DIAGNOSTIC OR THERAPEUTIC PROCEDURES'.