

MMP3 Antibody

Rabbit mAb

Catalog # AP90238

Product Information

Application	WB, IHC, IF, ICC, IHF
Primary Accession	P08254
Reactivity	Rat, Human, Mouse
Clonality	Monoclonal
Other Names	CHDS6; Matrix metalloproteinase-3 MMP3; MMP3; proteoglycanase; SL-1; STMY; STMY1; STR1; Stromelysin-1;
Isotype	Rabbit IgG
Host	Rabbit
Calculated MW	53977

Additional Information

Dilution	WB 1:500~1:2000 IHC 1:50~1:200 ICC/IF 1:50~1:200
Purification	Affinity-chromatography
Immunogen	A synthesized peptide derived from human MMP3
Description	MMP3 Can degrade fibronectin, laminin, gelatins of type I, III, IV, and V; collagens III, IV, X, and IX, and cartilage proteoglycans. Activates procollagenase. Belongs to the peptidase M10A family.
Storage Condition and Buffer	Rabbit IgG in phosphate buffered saline , pH 7.4, 150mM NaCl, 0.02% sodium azide and 50% glycerol. Store at +4°C short term. Store at -20°C long term. Avoid freeze / thaw cycle.

Protein Information

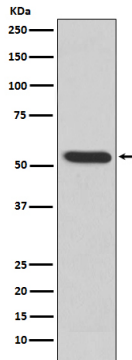
Name	MMP3
Synonyms	STMY1
Function	Metalloproteinase with a rather broad substrate specificity that can degrade fibronectin, laminin, gelatins of type I, III, IV, and V; collagens III, IV, X, and IX, and cartilage proteoglycans. Activates different molecules including growth factors, plasminogen or other matrix metalloproteinases such as MMP9 (PubMed: 11029580 , PubMed: 1371271). Once released into the extracellular matrix (ECM), the inactive pro-enzyme is activated by the plasmin cascade signaling pathway (PubMed: 2383557). Also acts intracellularly (PubMed: 22265821). For example, in dopaminergic neurons, gets activated by the serine protease HTRA2 upon stress and plays a pivotal role in DA neuronal degeneration by mediating microglial activation and alpha- synuclein/SNCA cleavage (PubMed: 21330369). In addition, plays a role in immune response and possesses antiviral activity against various viruses such as vesicular stomatitis virus, influenza A virus (H1N1) and human herpes virus 1

(PubMed:[35940311](#)). Mechanistically, translocates from the cytoplasm into the cell nucleus upon virus infection to influence NF-kappa-B activities (PubMed:[35940311](#)).

Cellular Location

Secreted, extracellular space, extracellular matrix. Nucleus. Cytoplasm

Images



Western blot analysis of MMP3 expression in MMP3 recombinant protein.

Image not found : 202311/AP90238-IHC.jpg

Immunohistochemical analysis of paraffin-embedded human liver cancer, using MMP3 Antibody.

Image not found : 202311/AP90238-IF.jpg

Immunofluorescent analysis of HeLa cells, using MMP3 Antibody.

Please note: All products are 'FOR RESEARCH USE ONLY. NOT FOR USE IN DIAGNOSTIC OR THERAPEUTIC PROCEDURES'.