

MMP2 Antibody

Rabbit mAb

Catalog # AP90239

Product Information

Application	WB, IHC
Primary Accession	P08253
Reactivity	Rat, Human, Mouse
Clonality	Monoclonal
Other Names	72 kDa gelatinase; 72 kDa type IV collagenase; CLG4; CLG4A; collagenase type IV-A; Gelatinase A; Matrix metalloproteinase-2; matrix metalloproteinase-II; MMP2; MMP2II;
Isotype	Rabbit IgG
Host	Rabbit
Calculated MW	73882

Additional Information

Dilution	WB 1:500~1:1000 IHC 1:50~1:200
Purification	Affinity-chromatography
Immunogen	A synthesized peptide derived from human MMP2
Description	MMP2 Ubiquitinous metalloproteinase that is involved in diverse functions such as remodeling of the vasculature, angiogenesis, tissue repair, tumor invasion, inflammation, and atherosclerotic plaque rupture. As well as degrading extracellular matrix proteins, can also act on several nonmatrix proteins such as big endothelial 1 and beta-type CGRP promoting vasoconstriction. Also cleaves KISS at a Gly- -Leu bond. Appears to have a role in myocardial cell death pathways.
Storage Condition and Buffer	Rabbit IgG in phosphate buffered saline , pH 7.4, 150mM NaCl, 0.02% sodium azide and 50% glycerol. Store at +4°C short term. Store at -20°C long term. Avoid freeze / thaw cycle.

Protein Information

Name	MMP2
Synonyms	CLG4A
Function	Ubiquitinous metalloproteinase that is involved in diverse functions such as remodeling of the vasculature, angiogenesis, tissue repair, tumor invasion, inflammation, and atherosclerotic plaque rupture. As well as degrading extracellular matrix proteins, can also act on several nonmatrix proteins such as big endothelial 1 and beta- type CGRP promoting vasoconstriction. Also cleaves KISS at a Gly- -Leu bond. Appears to have a role in myocardial cell death pathways. Contributes to myocardial oxidative stress by regulating the activity of GSK3beta. Cleaves GSK3beta in vitro. Involved in the formation of

the fibrovascular tissues in association with MMP14. [Isoform 2]: Mediates the proteolysis of CHUK/IKKA and initiates a primary innate immune response by inducing mitochondrial- nuclear stress signaling with activation of the pro-inflammatory NF- kappaB, NFAT and IRF transcriptional pathways.

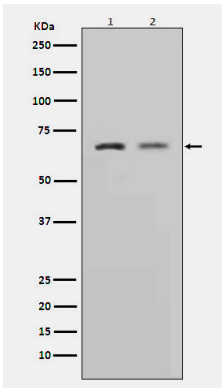
Cellular Location

[Isoform 1]: Secreted, extracellular space, extracellular matrix. Membrane. Nucleus Note=Colocalizes with integrin alphaV/beta3 at the membrane surface in angiogenic blood vessels and melanomas. Found in mitochondria, along microfibrils, and in nuclei of cardiomyocytes

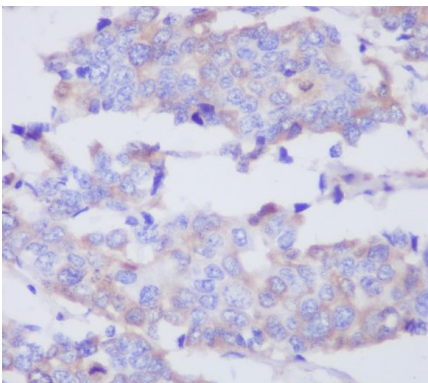
Tissue Location

Produced by normal skin fibroblasts. PEX is expressed in a number of tumors including gliomas, breast and prostate

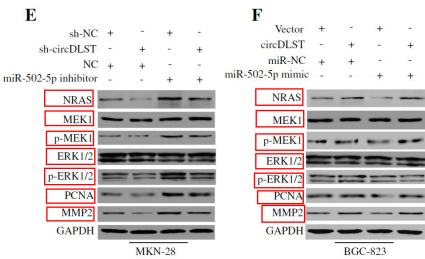
Images



Western blot analysis of MMP2 expression in (1)L6 cell lysate;(2)HeLa cell lysate.



Immunohistochemical analysis of paraffin-embedded human breast adenocarcinoma, using MMP2 Antibody.



CircDLST promotes the tumorigenesis and metastasis of gastric cancer by sponging miR-502-5p and activating the NRAS/MEK1/ERK1/2 signaling. -Molecular Cancer

Please note: All products are 'FOR RESEARCH USE ONLY. NOT FOR USE IN DIAGNOSTIC OR THERAPEUTIC PROCEDURES'.