

MMP9 Antibody

Rabbit mAb

Catalog # AP90253

Product Information

Application	WB, IHC, IF, FC, ICC, IHF
Primary Accession	P14780
Reactivity	Rat, Human
Clonality	Monoclonal
Other Names	MMP9; GELB; CLG4B; Matrix Metalloproteinase 9; MANDP2; Gelatinase beta;
Isotype	Rabbit IgG
Host	Rabbit
Calculated MW	78 KDa

Additional Information

Dilution	WB 1:500~1:2000 IHC 1:50~1:200 ICC/IF 1:50~1:200 FC 1:50
Purification	Affinity-chromatography
Immunogen	A synthesized peptide derived from human MMP9
Description	MMP9 May play an essential role in local proteolysis of the extracellular matrix and in leukocyte migration. Could play a role in bone osteoclastic resorption. Cleaves KiSS1 at a Gly- -Leu bond. Cleaves type IV and type V collagen into large C-terminal three quarter fragments and shorter N-terminal one quarter fragments. Degrades fibronectin but not laminin or Pz-peptide. Belongs to the peptidase M10A family.
Storage Condition and Buffer	Rabbit IgG in phosphate buffered saline , pH 7.4, 150mM NaCl, 0.02% sodium azide and 50% glycerol. Store at +4°C short term. Store at -20°C long term. Avoid freeze / thaw cycle.

Protein Information

Images

Western blot analysis of MMP9 expression in (1)Rat kidney tissue lysate;(2)Rat lung tissue lysate.

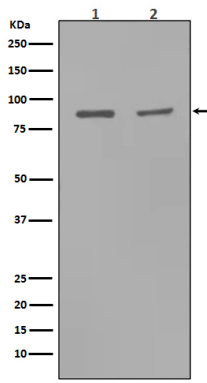


Image not found : 202311/AP90253-IHC.jpg

Immunohistochemical analysis of paraffin-embedded human colon cancer, using MMP9 Antibody.

Image not found : 202311/AP90253-IF.jpg

Immunofluorescent analysis of U87-MG cells, using MMP9 Antibody.

Please note: All products are 'FOR RESEARCH USE ONLY. NOT FOR USE IN DIAGNOSTIC OR THERAPEUTIC PROCEDURES'.