

CD11c Antibody

Rabbit mAb

Catalog # AP90254

Product Information

Application	WB, IHC, IF, ICC, IP, IHF
Primary Accession	P20702
Reactivity	Human
Clonality	Monoclonal
Other Names	p150/95 integrin alpha chain; Leu M5; SLEB6; ITGAX; CD11c; p150; Myeloid membrane antigen alpha subunit; Leukocyte surface antigen p150 95 alpha subunit; Integrin alpha-X;
Isotype	Rabbit IgG
Host	Rabbit
Calculated MW	127829

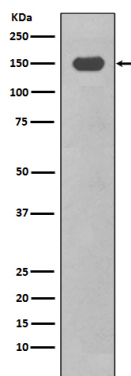
Additional Information

Dilution	WB 1:500~1:2000 IHC 1:50~1:200 ICC/IF 1:50~1:200 IP 1:50
Purification	Affinity-chromatography
Immunogen	A synthesized peptide derived from human CD11c
Description	Integrin alpha-X/beta-2 is a receptor for fibrinogen. It recognizes the sequence G-P-R in fibrinogen. It mediates cell-cell interaction during inflammatory responses. It is especially important in monocyte adhesion and chemotaxis.
Storage Condition and Buffer	Rabbit IgG in phosphate buffered saline , pH 7.4, 150mM NaCl, 0.02% sodium azide and 50% glycerol. Store at +4°C short term. Store at -20°C long term. Avoid freeze / thaw cycle.

Protein Information

Name	ITGAX
Synonyms	CD11C
Function	Integrin alpha-X/beta-2 is a receptor for fibrinogen. It recognizes the sequence G-P-R in fibrinogen. It mediates cell-cell interaction during inflammatory responses. It is especially important in monocyte adhesion and chemotaxis.
Cellular Location	Membrane; Single-pass type I membrane protein.
Tissue Location	Predominantly expressed in monocytes and granulocytes

Images



Western blot analysis of CD11c expression in THP-1 cell lysate treated with TPA.

Image not found : 202311/AP90254-IHC.jpg

Immunohistochemical analysis of paraffin-embedded human spleen, using CD11c Antibody.

Please note: All products are 'FOR RESEARCH USE ONLY. NOT FOR USE IN DIAGNOSTIC OR THERAPEUTIC PROCEDURES'.