

CD146 Antibody

Rabbit mAb

Catalog # AP90257

Product Information

Application	WB, IHC, IF, FC, ICC, IP, IHF
Primary Accession	P43121
Reactivity	Rat, Human, Mouse
Clonality	Monoclonal
Other Names	A32 antigen; CD 146; CD146; CD146 antigen; Cell surface glycoprotein P1H12; Gicerin; MCAM; Melanoma adhesion molecule; Melanoma associated antigen A32;
Isotype	Rabbit IgG
Host	Rabbit
Calculated MW	71607

Additional Information

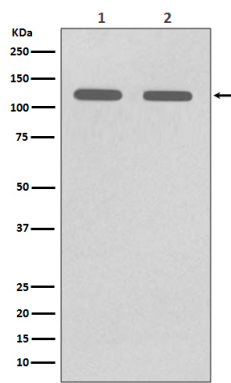
Dilution	WB 1:500~1:2000 IHC 1:50~1:200 ICC/IF 1:50~1:200 IP 1:50 FC 1:50
Purification	Affinity-chromatography
Immunogen	A synthesized peptide derived from human CD146
Description	CD146 plays a role in cell adhesion, and in cohesion of the endothelial monolayer at intercellular junctions in vascular tissue. Its expression may allow melanoma cells to interact with cellular elements of the vascular system, thereby enhancing hematogeneous tumor spread. Could be an adhesion molecule active in neural crest cells during embryonic development.
Storage Condition and Buffer	Rabbit IgG in phosphate buffered saline , pH 7.4, 150mM NaCl, 0.02% sodium azide and 50% glycerol. Store at +4°C short term. Store at -20°C long term. Avoid freeze / thaw cycle.

Protein Information

Name	MCAM
Synonyms	MUC18
Function	Plays a role in cell adhesion, and in cohesion of the endothelial monolayer at intercellular junctions in vascular tissue. Its expression may allow melanoma cells to interact with cellular elements of the vascular system, thereby enhancing hematogeneous tumor spread. Could be an adhesion molecule active in neural crest cells during embryonic development. Acts as a surface receptor that triggers tyrosine phosphorylation of FYN and PTK2/FAK1, and a transient increase in the intracellular calcium concentration.
Cellular Location	Membrane; Single-pass type I membrane protein.

Tissue Location	Detected in endothelial cells in vascular tissue throughout the body. May appear at the surface of neural crest cells during their embryonic migration. Appears to be limited to vascular smooth muscle in normal adult tissues. Associated with tumor progression and the development of metastasis in human malignant melanoma. Expressed most strongly on metastatic lesions and advanced primary tumors and is only rarely detected in benign melanocytic nevi and thin primary melanomas with a low probability of metastasis
------------------------	--

Images



Western blot analysis of CD146 expression in (1) A375 cell lysate;(2) HUVEC cell lysate.

Image not found : 202311/AP90257-IHC.jpg	Immunohistochemical analysis of paraffin-embedded human uterus, using CD146 Antibody.
Image not found : 202311/AP90257-IF.jpg	Immunofluorescent analysis of A375 cells, using CD146 Antibody.

Please note: All products are 'FOR RESEARCH USE ONLY. NOT FOR USE IN DIAGNOSTIC OR THERAPEUTIC PROCEDURES'.