

Pax2 Antibody

Rabbit mAb

Catalog # AP90260

Product Information

Application	WB, IHC, FC
Primary Accession	Q02962
Reactivity	Human, Mouse
Clonality	Monoclonal
Other Names	PAX2; Paired box protein Pax-2
Isotype	Rabbit IgG
Host	Rabbit
Calculated MW	44706

Additional Information

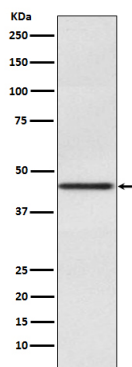
Dilution	WB 1:500~1:2000 IHC 1:50~1:200 FC 1:50
Purification	Affinity-chromatography
Immunogen	A synthesized peptide derived from human Pax2
Description	PAX2 mutations can be responsible for renal hypoplasia, either isolated or associated with various ophthalmologic manifestations ranging from retinal coloboma to microphthalmia. Lesions in the PAX6 gene accounts for most cases of aniridia, a congenital malformation of the eye, chiefly characterized by iris hypoplasia, which can cause blindness.
Storage Condition and Buffer	Rabbit IgG in phosphate buffered saline , pH 7.4, 150mM NaCl, 0.02% sodium azide and 50% glycerol. Store at +4°C short term. Store at -20°C long term. Avoid freeze / thaw cycle.

Protein Information

Name	PAX2
Function	Transcription factor that may have a role in kidney cell differentiation (PubMed: 24676634). Has a critical role in the development of the urogenital tract, the eyes, and the CNS.
Cellular Location	Nucleus.
Tissue Location	Expressed in primitive cells of the kidney, ureter, eye, ear and central nervous system

Images

Western blot analysis of Pax2 expression in Human fetal



kidney lysate.

Image not found : 202311/AP90260-IHC.jpg

Immunohistochemical analysis of paraffin-embedded human colon using Pax2 Antibody.

Please note: All products are 'FOR RESEARCH USE ONLY. NOT FOR USE IN DIAGNOSTIC OR THERAPEUTIC PROCEDURES'.