

LRP1 Antibody

Rabbit mAb

Catalog # AP90262

Product Information

Application	WB, IHC, IF, FC, ICC, IP, IHF
Primary Accession	Q07954
Reactivity	Rat, Human, Mouse
Clonality	Monoclonal
Other Names	A2MR; alpha 2MR; Alpha 2 macroglobulin receptor; CD91; APR; LRP1; LRP85; TGFR5;
Isotype	Rabbit IgG
Host	Rabbit
Calculated MW	504606

Additional Information

Dilution	WB 1:10000~1:20000 IHC 1:50~1:100 ICC/IF 1:50~1:100 IP 1:30 FC 1:50
Purification	Affinity-chromatography
Immunogen	A synthesized peptide derived from human LRP1
Description	Endocytic receptor involved in endocytosis and in phagocytosis of apoptotic cells. Required for early embryonic development. Involved in cellular lipid homeostasis. Involved in the plasma clearance of chylomicron remnants and activated LRPAP1 (alpha 2-macroglobulin), as well as the local metabolism of complexes between plasminogen activators and their endogenous inhibitors. May modulate cellular events, such as APP metabolism, kinase-dependent intracellular signaling, neuronal calcium signaling as well as neurotransmission. Functions as a receptor for Pseudomonas aeruginosa exotoxin A.
Storage Condition and Buffer	Rabbit IgG in phosphate buffered saline , pH 7.4, 150mM NaCl, 0.02% sodium azide and 50% glycerol. Store at +4°C short term. Store at -20°C long term. Avoid freeze / thaw cycle.

Protein Information

Name	LRP1 (HGNC:6692)
Synonyms	A2MR, APR
Function	Endocytic receptor involved in endocytosis and in phagocytosis of apoptotic cells (PubMed: 11907044 , PubMed: 12713657). Required for early embryonic development (By similarity). Involved in cellular lipid homeostasis. Involved in the plasma clearance of chylomicron remnants and activated LRPAP1 (alpha 2-macroglobulin), as well as the local metabolism of complexes between plasminogen activators and their endogenous inhibitors. Acts as an LRPAP1 alpha-2- macroglobulin receptor (PubMed: 1702392 , PubMed: 26142438). Acts

as TAU/MAPT receptor and controls the endocytosis of TAU/MAPT as well as its subsequent spread (PubMed:[32296178](#)). May modulate cellular events, such as APP metabolism, kinase-dependent intracellular signaling, neuronal calcium signaling as well as neurotransmission (PubMed:[12888553](#)). Also acts as a receptor for IGFBP3 to mediate cell growth inhibition (PubMed:[9252371](#)).

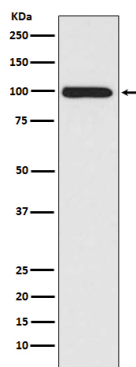
Cellular Location

[Low-density lipoprotein receptor-related protein 1 85 kDa subunit]: Cell membrane; Single-pass type I membrane protein Membrane, coated pit [Low-density lipoprotein receptor-related protein 1 intracellular domain]: Cytoplasm Nucleus. Note=After cleavage, the intracellular domain (LRPICD) is detected both in the cytoplasm and in the nucleus.

Tissue Location

Most abundant in liver, brain and lung.

Images



Western blot analysis of LRP1 expression in A549 cell lysate.

Image not found : 202311/AP90262-IHC.jpg

Immunohistochemical analysis of paraffin-embedded human liver carcinoma, using LRP1 Antibody.

Please note: All products are 'FOR RESEARCH USE ONLY. NOT FOR USE IN DIAGNOSTIC OR THERAPEUTIC PROCEDURES'.