

Calmodulin Antibody

Rabbit mAb

Catalog # AP90281

Product Information

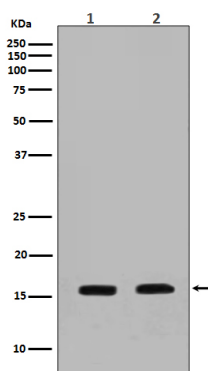
Application	WB, IHC, IF, FC, ICC, IP, IHF
Primary Accession	P62158
Reactivity	Rat, Human, Mouse
Clonality	Monoclonal
Other Names	CALM; CALM1; CALM2; CALM3; CAM; CAM1; CAM2; CAM3; CAMB; CAMC;
Isotype	Rabbit IgG
Host	Rabbit
Calculated MW	17 KDa

Additional Information

Dilution	WB 1:500~1:2000 IHC 1:50~1:200 ICC/IF 1:50~1:200 IP 1:50 FC 1:50
Purification	Affinity-chromatography
Immunogen	A synthesized peptide derived from human Calmodulin
Description	Calmodulin is the archetype of the family of calcium-modulated proteins of which nearly 20 members have been found. They are identified by their occurrence in the cytosol or on membranes facing the cytosol and by a high affinity for calcium.
Storage Condition and Buffer	Rabbit IgG in phosphate buffered saline , pH 7.4, 150mM NaCl, 0.02% sodium azide and 50% glycerol. Store at +4°C short term. Store at -20°C long term. Avoid freeze / thaw cycle.

Protein Information

Images



Western blot analysis of Calmodulin expression in (1) NIH-3T3 cell lysate; (2) MCF-7 cell lysate.

Image not found : 202311/AP90281-IHC.jpg

Immunohistochemical analysis of paraffin-embedded human kidney, using Calmodulin Antibody .

Please note: All products are 'FOR RESEARCH USE ONLY. NOT FOR USE IN DIAGNOSTIC OR THERAPEUTIC PROCEDURES'.