

MMP14 Antibody

Rabbit mAb

Catalog # AP90283

Product Information

Application	WB, IHC, IF, FC, ICC, IP, IHF
Primary Accession	P50281
Reactivity	Rat, Human, Mouse
Clonality	Monoclonal
Other Names	MMP-14; MMP-X1; MT-MMP; MT1MMP; MTMMP1; WNCHRS; MT1-MMP; MT-MMP 1;
Isotype	Rabbit IgG
Host	Rabbit
Calculated MW	65894

Additional Information

Dilution	WB 1:1000~1:2000 IHC 1:50~1:200 ICC/IF 1:50~1:200 IP 1:50 FC 1:50
Purification	Affinity-chromatography
Immunogen	A synthesized peptide derived from human MMP14
Description	MMP14 Seems to specifically activate progelatinase A. May thus trigger invasion by tumor cells by activating progelatinase A on the tumor cell surface. Belongs to the peptidase M10A family.
Storage Condition and Buffer	Rabbit IgG in phosphate buffered saline , pH 7.4, 150mM NaCl, 0.02% sodium azide and 50% glycerol. Store at +4°C short term. Store at -20°C long term. Avoid freeze / thaw cycle.

Protein Information

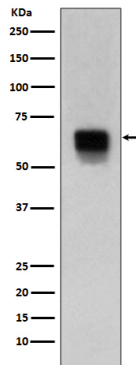
Name	MMP14
Function	Endopeptidase that degrades various components of the extracellular matrix such as collagen (PubMed: 8015608). Essential for pericellular collagenolysis and modeling of skeletal and extraskelatal connective tissues during development (By similarity). Activates progelatinase A/MMP2, thereby acting as a positive regulator of cell growth and migration (PubMed: 22065321 , PubMed: 8015608). Involved in the formation of the fibrovascular tissues in association with pro-MMP2 (PubMed: 12714657 , PubMed: 22065321). May be involved in actin cytoskeleton reorganization by cleaving PTK7 (PubMed: 20837484). Acts as a regulator of Notch signaling by mediating cleavage and inhibition of DLL1 (PubMed: 21572390). Cleaves ADGRB1 to release vasculostatin-40 which inhibits angiogenesis (PubMed: 22330140). Acts as a negative regulator of the GDF15-GFRAL aversive response by mediating cleavage and inactivation of GFRAL (PubMed: 35177851).
Cellular Location	Cell membrane; Single-pass type I membrane protein. Melanosome.

Cytoplasm Note=Identified by mass spectrometry in melanosome fractions from stage I to stage IV (PubMed:17081065). Forms a complex with BST2 and localizes to the cytoplasm (PubMed:17081065)

Tissue Location

Expressed in stromal cells of colon, breast, and head and neck. Expressed in lung tumors.

Images



Western blot analysis of MMP14 expression in human spleen lysate.

Image not found : 202311/AP90283-IHC.jpg

Immunohistochemical analysis of paraffin-embedded human kidney, using MMP14 Antibody .

Please note: All products are 'FOR RESEARCH USE ONLY. NOT FOR USE IN DIAGNOSTIC OR THERAPEUTIC PROCEDURES'.