

Integrin beta 3 Antibody

Rabbit mAb

Catalog # AP90284

Product Information

Application	WB, IHC, IF, ICC, IHF
Primary Accession	P05106
Reactivity	Rat, Human, Mouse
Clonality	Monoclonal
Other Names	CD61; GP3A; GPIIIa; Integrin beta-3; integrin, beta 3 (platelet glycoprotein IIIa, antigen CD61); ITB3; ITGB3;
Isotype	Rabbit IgG
Host	Rabbit
Calculated MW	87058

Additional Information

Dilution	WB 1:1000~1:2000 IHC 1:50~1:200 ICC/IF 1:50~1:200
Purification	Affinity-chromatography
Immunogen	A synthesized peptide derived from human Integrin beta 3
Description	Integrin alpha-IIb/beta-3 recognizes the sequence H-H-L-G-G-G-A-K-Q-A-G-D-V in fibrinogen gamma chain. Following activation integrin alpha-IIb/beta-3 brings about platelet/platelet interaction through binding of soluble fibrinogen. This step leads to rapid platelet aggregation which physically plugs ruptured endothelial surface. Fibrinogen binding enhances SELP expression in activated platelets (By similarity).
Storage Condition and Buffer	Rabbit IgG in phosphate buffered saline , pH 7.4, 150mM NaCl, 0.02% sodium azide and 50% glycerol. Store at +4°C short term. Store at -20°C long term. Avoid freeze / thaw cycle.

Protein Information

Name	ITGB3 (HGNC:6156)
Synonyms	GP3A
Function	Integrin alpha-V/beta-3 (ITGAV:ITGB3) is a receptor for cytotactin, fibronectin, laminin, matrix metalloproteinase-2, osteopontin, osteomodulin, prothrombin, thrombospondin, vitronectin and von Willebrand factor. Integrin alpha-IIb/beta-3 (ITGA2B:ITGB3) is a receptor for fibronectin, fibrinogen, plasminogen, prothrombin, thrombospondin and vitronectin. Integrins alpha-IIb/beta-3 and alpha- V/beta-3 recognize the sequence R-G-D in a wide array of ligands. Integrin alpha-IIb/beta-3 recognizes the sequence H-H-L-G-G-G-A-K-Q-A- G-D-V in fibrinogen gamma chain (By similarity). Following activation integrin alpha-IIb/beta-3 brings about platelet/platelet interaction through binding of soluble fibrinogen (PubMed: 9111081). This

step leads to rapid platelet aggregation which physically plugs ruptured endothelial surface. Fibrinogen binding enhances SELP expression in activated platelets (By similarity). ITGAV:ITGB3 binds to fractalkine (CX3CL1) and acts as its coreceptor in CX3CR1-dependent fractalkine signaling (PubMed:[23125415](#), PubMed:[24789099](#)). ITGAV:ITGB3 binds to NRG1 (via EGF domain) and this binding is essential for NRG1-ERBB signaling (PubMed:[20682778](#)). ITGAV:ITGB3 binds to FGF1 and this binding is essential for FGF1 signaling (PubMed:[18441324](#)). ITGAV:ITGB3 binds to FGF2 and this binding is essential for FGF2 signaling (PubMed:[28302677](#)). ITGAV:ITGB3 binds to IGF1 and this binding is essential for IGF1 signaling (PubMed:[19578119](#)). ITGAV:ITGB3 binds to IGF2 and this binding is essential for IGF2 signaling (PubMed:[28873464](#)). ITGAV:ITGB3 binds to IL1B and this binding is essential for IL1B signaling (PubMed:[29030430](#)). ITGAV:ITGB3 binds to PLA2G2A via a site (site 2) which is distinct from the classical ligand-binding site (site 1) and this induces integrin conformational changes and enhanced ligand binding to site 1 (PubMed:[18635536](#), PubMed:[25398877](#)). ITGAV:ITGB3 acts as a receptor for fibrillin-1 (FBN1) and mediates R-G-D-dependent cell adhesion to FBN1 (PubMed:[12807887](#)). In brain, plays a role in synaptic transmission and plasticity. Involved in the regulation of the serotonin neurotransmission, is required to localize to specific compartments within the synapse the serotonin receptor SLC6A4 and for an appropriate reuptake of serotonin. Controls excitatory synaptic strength by regulating GRIA2-containing AMPAR endocytosis, which affects AMPAR abundance and composition (By similarity). ITGAV:ITGB3 act as a receptor for CD40LG (PubMed:[31331973](#)). ITGAV:ITGB3 acts as a receptor for IBSP and promotes cell adhesion and migration to IBSP (PubMed:[10640428](#)).

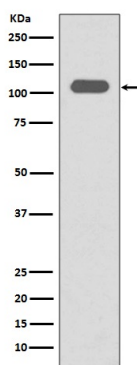
Cellular Location

Cell membrane; Single-pass type I membrane protein. Cell projection, lamellipodium membrane. Cell junction, focal adhesion. Postsynaptic cell membrane {ECO:0000250|UniProtKB:O54890}; Single-pass type I membrane protein {ECO:0000250|UniProtKB:O54890}. Synapse {ECO:0000250|UniProtKB:O54890}

Tissue Location

Isoform beta-3A and isoform beta-3C are widely expressed. Isoform beta-3A is specifically expressed in osteoblast cells; isoform beta-3C is specifically expressed in prostate and testis

Images



Western blot analysis of Integrin beta3 expression in human spleen lysate.

Image not found : 202311/AP90284-IHC.jpg

Immunohistochemical analysis of paraffin-embedded human testis, using Integrin beta 3 Antibody .

Please note: All products are 'FOR RESEARCH USE ONLY. NOT FOR USE IN DIAGNOSTIC OR THERAPEUTIC PROCEDURES'.