

# Synaptophysin Antibody

Rabbit mAb

Catalog # AP90291

## Product Information

---

<b>Application</b>	WB, IHC, IF, ICC, IHF
<b>Primary Accession</b>	<a href="#">P08247</a>
<b>Reactivity</b>	Rat, Human, Mouse
<b>Clonality</b>	Monoclonal
<b>Other Names</b>	Major synaptic vesicle protein p38; MRXSYP; Synaptophysin; SYP; SYPH
<b>Isotype</b>	Rabbit IgG
<b>Host</b>	Rabbit
<b>Calculated MW</b>	33845

## Additional Information

---

<b>Dilution</b>	WB 1:5000~1:10000 IHC 1:50~1:200 ICC/IF 1:50~1:200
<b>Purification</b>	Affinity-chromatography
<b>Immunogen</b>	A synthesized peptide derived from human Synaptophysin
<b>Description</b>	SYP Possibly involved in structural functions as organizing other membrane components or in targeting the vesicles to the plasma membrane. Involved in the regulation of short-term and long-term synaptic plasticity. Belongs to the synaptophysin/synaptobrevin family. Homohexamer or homotetramer. Note: This description may include information from UniProtKB.
<b>Storage Condition and Buffer</b>	Rabbit IgG in phosphate buffered saline , pH 7.4, 150mM NaCl, 0.02% sodium azide and 50% glycerol. Store at +4°C short term. Store at -20°C long term. Avoid freeze / thaw cycle.

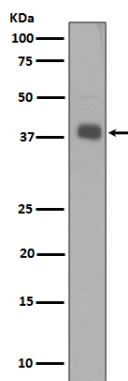
## Protein Information

---

<b>Name</b>	SYP
<b>Function</b>	Possibly involved in structural functions as organizing other membrane components or in targeting the vesicles to the plasma membrane. Involved in the regulation of short-term and long-term synaptic plasticity (By similarity).
<b>Cellular Location</b>	Cytoplasmic vesicle, secretory vesicle, synaptic vesicle membrane; Multi-pass membrane protein. Synapse, synaptosome
<b>Tissue Location</b>	Expressed in the brain, with expression in the hippocampus, the neuropil in the dentate gyrus, where expression is higher in the outer half of the molecular layer than in the inner half, and in the neuropil of CA4 and CA3 (PubMed:8838578). Expressed in the putamen (at protein level) (PubMed:17296554)

## Images

---



Western blot analysis of Synaptophysin expression in SH-SY5Y cell lysate.

Image not found : 202311/AP90291-IHC.jpg

Immunohistochemical analysis of paraffin-embedded mouse brain, using Synaptophysin Antibody .

Image not found : 202311/AP90291-IF.jpg

Immunofluorescent analysis of PC-12 cells, using Synaptophysin Antibody .

Please note: All products are 'FOR RESEARCH USE ONLY. NOT FOR USE IN DIAGNOSTIC OR THERAPEUTIC PROCEDURES'.