

# CDC7 Antibody

Rabbit mAb

Catalog # AP90296

## Product Information

---

<b>Application</b>	WB, FC
<b>Primary Accession</b>	<a href="#">O00311</a>
<b>Reactivity</b>	Rat, Human, Mouse
<b>Clonality</b>	Monoclonal
<b>Other Names</b>	Cell division cycle 7-related protein kinase, EC 2.7.11.1, CDC7-related kinase, HsCdc7, huCdc7, CDC7, CDC7L1; Hsk1 ; CDC7 kinase
<b>Isotype</b>	Rabbit IgG
<b>Host</b>	Rabbit
<b>Calculated MW</b>	63888

## Additional Information

---

<b>Dilution</b>	WB 1:1000~1:2000 FC 1:100
<b>Purification</b>	Affinity-chromatography
<b>Immunogen</b>	A synthesized peptide derived from human CDC7
<b>Description</b>	DNA replication in eukaryotic cells is dependent on the phosphorylation of the pre-replicative complex (preRC) at the origin of replication. Two complexes of proteins mediate this event, the cyclin dependent kinase (CDK) complex, and the Cdc7 kinase-ASK complex. Human Cdc7 kinase consists of 574 amino acids with a molecular weight of 55 kDa. The activity of Cdc7 kinase oscillates during cell cycle. The major targets of Cdc7 kinase are proteins that belong to the MCM complex (mini chromosome maintenance proteins).
<b>Storage Condition and Buffer</b>	Rabbit IgG in phosphate buffered saline , pH 7.4, 150mM NaCl, 0.02% sodium azide and 50% glycerol. Store at +4°C short term. Store at -20°C long term. Avoid freeze / thaw cycle.

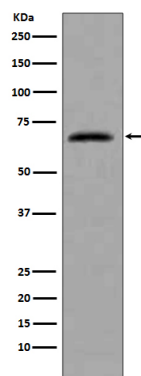
## Protein Information

---

<b>Name</b>	CDC7 ( <a href="#">HGNC:1745</a> )
<b>Synonyms</b>	CDC7L1
<b>Function</b>	Kinase involved in initiation of DNA replication. Phosphorylates critical substrates that regulate the G1/S phase transition and initiation of DNA replication, such as MCM proteins and CLASPIN.
<b>Cellular Location</b>	Nucleus.

## Images

---



Western blot analysis of extracts from HeLa cells, using CDC7 antibody.

Please note: All products are 'FOR RESEARCH USE ONLY. NOT FOR USE IN DIAGNOSTIC OR THERAPEUTIC PROCEDURES'.