

CD63 Antibody

Rabbit mAb

Catalog # AP90297

Product Information

Application	WB, IHC
Primary Accession	P08962
Reactivity	Human
Clonality	Monoclonal
Other Names	CD63 antigen; Tetraspanin-30; Tspan-30; Lysosomal-associated membrane protein 3; Lamp-3; CD63; MLA1; TSPAN30
Isotype	Rabbit IgG
Host	Rabbit
Calculated MW	25637

Additional Information

Dilution	WB 1:1000~1:2000 IHC 1:500~1:1000
Purification	Affinity-chromatography
Immunogen	A synthesized peptide derived from human CD63
Description	Functions as cell surface receptor for TIMP1 and plays a role in the activation of cellular signaling cascades. Plays a role in the activation of ITGB1 and integrin signaling, leading to the activation of AKT, FAK/PTK2 and MAP kinases. Promotes cell survival, reorganization of the actin cytoskeleton, cell adhesion, spreading and migration, via its role in the activation of AKT and FAK/PTK2.
Storage Condition and Buffer	Rabbit IgG in phosphate buffered saline , pH 7.4, 150mM NaCl, 0.02% sodium azide and 50% glycerol. Store at +4°C short term. Store at -20°C long term. Avoid freeze / thaw cycle.

Protein Information

Name	CD63
Synonyms	MLA1, TSPAN30
Function	Functions as a cell surface receptor for TIMP1 and plays a role in the activation of cellular signaling cascades. Plays a role in the activation of ITGB1 and integrin signaling, leading to the activation of AKT, FAK/PTK2 and MAP kinases. Promotes cell survival, reorganization of the actin cytoskeleton, cell adhesion, spreading and migration, via its role in the activation of AKT and FAK/PTK2. Plays a role in VEGFA signaling via its role in regulating the internalization of KDR/VEGFR2. Plays a role in intracellular vesicular transport processes, and is required for normal trafficking of the PMEL luminal domain that is essential for the development and maturation of melanocytes. Plays a role in the adhesion of leukocytes onto endothelial cells via its role in the regulation of SELP trafficking. May play a role in mast cell degranulation in

response to Ms4a2/FceRI stimulation, but not in mast cell degranulation in response to other stimuli.

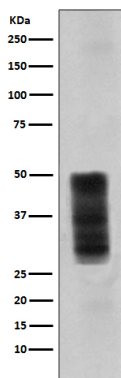
Cellular Location

Cell membrane; Multi-pass membrane protein. Lysosome membrane; Multi-pass membrane protein. Late endosome membrane; Multi-pass membrane protein. Endosome, multivesicular body. Melanosome. Secreted, extracellular exosome. Cell surface. Note=Also found in Weibel-Palade bodies of endothelial cells (PubMed:10793155). Located in platelet dense granules (PubMed:7682577). Detected in a subset of pre-melanosomes Detected on intraluminal vesicles (ILVs) within multivesicular bodies (PubMed:21962903).

Tissue Location

Detected in platelets (at protein level). Dysplastic nevi, radial growth phase primary melanomas, hematopoietic cells, tissue macrophages.

Images



Western blot analysis of CD63 expression in A375 cell lysate.

Image not found : 202311/AP90297-IHC.jpg

Immunohistochemical analysis of paraffin-embedded human spleen, using CD63 Antibody .

Please note: All products are 'FOR RESEARCH USE ONLY. NOT FOR USE IN DIAGNOSTIC OR THERAPEUTIC PROCEDURES'.