

HAPLN1 Antibody

Rabbit mAb

Catalog # AP90302

Product Information

Application	WB, IHC, IF, ICC, IHF
Primary Accession	P10915
Reactivity	Rat, Human, Mouse
Clonality	Monoclonal
Other Names	Hyaluronan and proteoglycan link protein 1; Cartilage-linking protein 1; Cartilage-link protein; Proteoglycan link protein; HAPLN1; CRTL1
Isotype	Rabbit IgG
Host	Rabbit
Calculated MW	40166

Additional Information

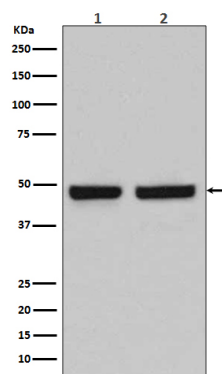
Dilution	WB 1:500~1:2000 IHC 1:50~1:200 ICC/IF 1:50~1:200
Purification	Affinity-chromatography
Immunogen	A synthesized peptide derived from human HAPLN1
Description	HAPLN1 belongs to the HAPLN family. It contains 1 Ig like V type (immunoglobulin like) domain and 2 Link domains. This protein stabilizes the aggregates of proteoglycan monomers with hyaluronic acid in the extracellular cartilage matrix.
Storage Condition and Buffer	Rabbit IgG in phosphate buffered saline , pH 7.4, 150mM NaCl, 0.02% sodium azide and 50% glycerol. Store at +4°C short term. Store at -20°C long term. Avoid freeze / thaw cycle.

Protein Information

Name	HAPLN1
Synonyms	CRTL1
Function	Stabilizes the aggregates of proteoglycan monomers with hyaluronic acid in the extracellular cartilage matrix.
Cellular Location	Secreted, extracellular space, extracellular matrix
Tissue Location	Widely expressed. Weakly expressed in the brain.

Images

Western blot analysis of HAPLN1 expression in (1) Caco2



cell lysate; (2) Mouse spleen lysate.

Image not found : 202311/AP90302-IHC.jpg

Immunohistochemical analysis of paraffin-embedded human kidney, using HAPLN1 Antibody .

Please note: All products are 'FOR RESEARCH USE ONLY. NOT FOR USE IN DIAGNOSTIC OR THERAPEUTIC PROCEDURES'.