

# Flotillin 1 Antibody

Rabbit mAb

Catalog # AP90308

## Product Information

<b>Application</b>	WB
<b>Primary Accession</b>	<a href="#">O75955</a>
<b>Reactivity</b>	Human, Mouse
<b>Clonality</b>	Monoclonal
<b>Other Names</b>	Flotillin1 ; Flotillin 1; Reggie 2; FLOT1; Integral membrane component of caveolae;
<b>Isotype</b>	Rabbit IgG
<b>Host</b>	Rabbit
<b>Calculated MW</b>	47355

## Additional Information

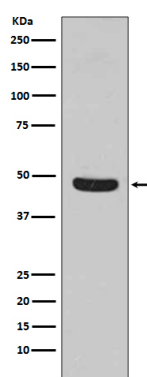
<b>Dilution</b>	WB 1:500~1:2000
<b>Purification</b>	Affinity-chromatography
<b>Immunogen</b>	A synthesized peptide derived from human Flotillin 1
<b>Description</b>	May act as a scaffolding protein within caveolar membranes, functionally participating in formation of caveolae or caveolae-like vesicles.
<b>Storage Condition and Buffer</b>	Rabbit IgG in phosphate buffered saline , pH 7.4, 150mM NaCl, 0.02% sodium azide and 50% glycerol. Store at +4°C short term. Store at -20°C long term. Avoid freeze / thaw cycle.

## Protein Information

<b>Name</b>	FLOT1
<b>Function</b>	May act as a scaffolding protein within caveolar membranes, functionally participating in formation of caveolae or caveolae-like vesicles.
<b>Cellular Location</b>	Cell membrane; Peripheral membrane protein. Endosome Membrane, caveola {ECO:0000250 UniProtKB:O08917}; Peripheral membrane protein {ECO:0000250 UniProtKB:O08917}. Melanosome. Membrane raft. Note=Identified by mass spectrometry in melanosome fractions from stage I to stage IV (PubMed:17081065) Membrane-associated protein of caveola (By similarity) {ECO:0000250 UniProtKB:O08917, ECO:0000269 PubMed:17081065}

## Images

Western blot analysis of Flotillin 1 expression in HeLa cell



lysate.

Please note: All products are 'FOR RESEARCH USE ONLY. NOT FOR USE IN DIAGNOSTIC OR THERAPEUTIC PROCEDURES'.