

Synaptophysin Antibody

Rabbit mAb

Catalog # AP90316

Product Information

Application	WB, IHC, IF, FC, ICC, IP, IHF
Primary Accession	P08247
Reactivity	Rat, Human, Mouse
Clonality	Monoclonal
Other Names	Major synaptic vesicle protein p38; MRXSYP; Synaptophysin; SYP; SYPH;Syn p38; SypI;
Isotype	Rabbit IgG
Host	Rabbit
Calculated MW	33845

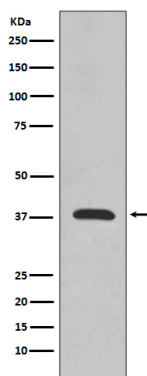
Additional Information

Dilution	WB 1:500~1:2000 IHC 1:50~1:200 ICC/IF 1:50~1:200 IP 1:50 FC 1:50
Purification	Affinity-chromatography
Immunogen	A synthesized peptide derived from human Synaptophysin
Description	SYP Possibly involved in structural functions as organizing other membrane components or in targeting the vesicles to the plasma membrane. Involved in the regulation of short-term and long-term synaptic plasticity. Belongs to the synaptophysin/synaptobrevin family. Homoheptamer or homotetramer.
Storage Condition and Buffer	Rabbit IgG in phosphate buffered saline , pH 7.4, 150mM NaCl, 0.02% sodium azide and 50% glycerol. Store at +4°C short term. Store at -20°C long term. Avoid freeze / thaw cycle.

Protein Information

Name	SYP
Function	Possibly involved in structural functions as organizing other membrane components or in targeting the vesicles to the plasma membrane. Involved in the regulation of short-term and long-term synaptic plasticity (By similarity).
Cellular Location	Cytoplasmic vesicle, secretory vesicle, synaptic vesicle membrane; Multi-pass membrane protein. Synapse, synaptosome
Tissue Location	Expressed in the brain, with expression in the hippocampus, the neuropil in the dentate gyrus, where expression is higher in the outer half of the molecular layer than in the inner half, and in the neuropil of CA4 and CA3 (PubMed:8838578). Expressed in the putamen (at protein level) (PubMed:17296554)

Images



Western blot analysis of Synaptophysin expression in rat brain lysate.

Image not found : 202311/AP90316-IHC.jpg

Immunohistochemical analysis of paraffin-embedded human kidney, using Synaptophysin Antibody .

Image not found : 202311/AP90316-IF.jpg

Immunofluorescent analysis of PC-12 cells, using Synaptophysin Antibody .

Please note: All products are 'FOR RESEARCH USE ONLY. NOT FOR USE IN DIAGNOSTIC OR THERAPEUTIC PROCEDURES'.