

TCF3 Antibody

Rabbit mAb

Catalog # AP90340

Product Information

Application	WB, FC
Primary Accession	Q9HCS4
Reactivity	Human
Clonality	Monoclonal
Other Names	Transcription factor 7-like 1; HMG box transcription factor 3; TCF-3; TCF7L1; TCF3;
Isotype	Rabbit IgG
Host	Rabbit
Calculated MW	62631

Additional Information

Dilution	WB 1:500~1:2000
Purification	Affinity-chromatography
Immunogen	A synthesized peptide derived from human TCF3
Description	Transcriptional regulator. Involved in the initiation of neuronal differentiation. Heterodimers between TCF3 and tissue- specific basic helix-loop-helix (bHLH) proteins play major roles in determining tissue-specific cell fate during embryogenesis, like muscle or early B-cell differentiation. Dimers bind DNA on E- box motifs: 5'-CANNTG-3'. Binds to the kappa-E2 site in the kappa immunoglobulin gene enhancer. Binds to IEB1 and IEB2, which are short DNA sequences in the insulin gene transcription control region.
Storage Condition and Buffer	Rabbit IgG in phosphate buffered saline , pH 7.4, 150mM NaCl, 0.02% sodium azide and 50% glycerol. Store at +4°C short term. Store at -20°C long term. Avoid freeze / thaw cycle.

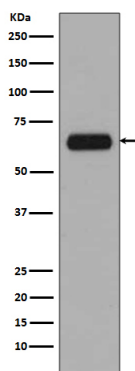
Protein Information

Name	TCF7L1
Synonyms	TCF3
Function	Participates in the Wnt signaling pathway. Binds to DNA and acts as a repressor in the absence of CTNNB1, and as an activator in its presence. Necessary for the terminal differentiation of epidermal cells, the formation of keratohyalin granules and the development of the barrier function of the epidermis (By similarity). Down-regulates NQO1, leading to increased mitomycin c resistance.
Cellular Location	Nucleus.

Tissue Location

Detected in hair follicles and skin keratinocytes, and at lower levels in stomach epithelium

Images



Western blot analysis of TCF3 expression in A431 cell lysate.

Please note: All products are 'FOR RESEARCH USE ONLY. NOT FOR USE IN DIAGNOSTIC OR THERAPEUTIC PROCEDURES'.