

# Phospho-CDK1/2/3 (T14) Antibody

Rabbit mAb

Catalog # AP90344

## Product Information

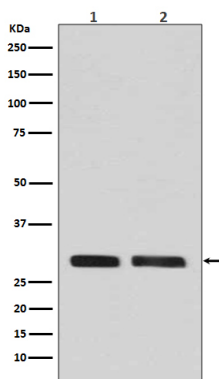
<b>Application</b>	WB, IHC, IF, ICC, IP, IHF
<b>Primary Accession</b>	<a href="#">P06493/P24941/Q00526</a>
<b>Reactivity</b>	Rat, Human, Mouse
<b>Clonality</b>	Monoclonal
<b>Other Names</b>	CDK1; CDK2; CDK3;
<b>Isotype</b>	Rabbit IgG
<b>Host</b>	Rabbit
<b>Calculated MW</b>	34 KDa

## Additional Information

<b>Dilution</b>	WB 1:500~1:2000 IHC 1:50~1:200 ICC/IF 1:50~1:200 IP 1:50
<b>Purification</b>	Affinity-chromatography
<b>Immunogen</b>	A synthesized peptide derived from human Phospho-CDK1/2/3 (T14)
<b>Description</b>	Plays a key role in the control of the eukaryotic cell cycle, where it is required for entry into S-phase and mitosis.
<b>Storage Condition and Buffer</b>	Rabbit IgG in phosphate buffered saline , pH 7.4, 150mM NaCl, 0.02% sodium azide and 50% glycerol. Store at +4°C short term. Store at -20°C long term. Avoid freeze / thaw cycle.

## Protein Information

## Images



Western blot analysis of Phospho-CDK1/2/3 (T14) expression in (1) A431 cell lysate; (2) HeLa cell lysate.