

DNAJC15 Antibody

Rabbit mAb

Catalog # AP90345

Product Information

Application	WB, IHC
Primary Accession	Q9Y5T4
Reactivity	Rat, Human, Mouse
Clonality	Monoclonal
Other Names	HSD18; MCJ; Methylation controlled J protein; DNAJC15; DNAJD1; GIG22; DJC1
Isotype	Rabbit IgG
Host	Rabbit
Calculated MW	16383

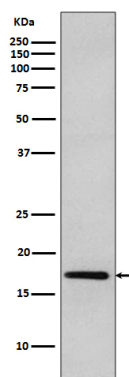
Additional Information

Dilution	WB 1:500~1:2000 IHC 1:50~1:200
Purification	Affinity-chromatography
Immunogen	A synthesized peptide derived from human DNAJC15
Description	Negative regulator of the mitochondrial respiratory chain. Prevents mitochondrial hyperpolarization state and restricts mitochondrial generation of ATP (By similarity). Acts as an import component of the TIM23 translocase complex. Stimulates the ATPase activity of HSPA9.
Storage Condition and Buffer	Rabbit IgG in phosphate buffered saline , pH 7.4, 150mM NaCl, 0.02% sodium azide and 50% glycerol. Store at +4°C short term. Store at -20°C long term. Avoid freeze / thaw cycle.

Protein Information

Name	DNAJC15
Synonyms	DNAJD1
Function	Negative regulator of the mitochondrial respiratory chain. Prevents mitochondrial hyperpolarization state and restricts mitochondrial generation of ATP (By similarity). Acts as an import component of the TIM23 translocase complex. Stimulates the ATPase activity of HSPA9.
Cellular Location	Mitochondrion inner membrane; Single-pass membrane protein
Tissue Location	Expressed at highest levels in heart, followed by liver and kidney.

Images



Western blot analysis of DNAJC15 expression in MCF-7 cell lysate.

Image not found : 202311/AP90345-IHC.jpg

Immunohistochemical analysis of paraffin-embedded human colon carcinoma, using DNAJC15 Antibody.

Please note: All products are 'FOR RESEARCH USE ONLY. NOT FOR USE IN DIAGNOSTIC OR THERAPEUTIC PROCEDURES'.