

# Bim Antibody

Rabbit mAb

Catalog # AP90347

## Product Information

<b>Application</b>	WB, IHC, IF, FC, ICC, IP, IHF
<b>Primary Accession</b>	<a href="#">O43521</a>
<b>Reactivity</b>	Rat, Human, Mouse
<b>Clonality</b>	Monoclonal
<b>Other Names</b>	BAM; BIM; BOD; BimL; BimS; BimEL; BIM-beta6; BIM-beta7; BIM-alpha6;BCL2L11;
<b>Isotype</b>	Rabbit IgG
<b>Host</b>	Rabbit
<b>Calculated MW</b>	22171

## Additional Information

<b>Dilution</b>	WB 1:500~1:1000 IHC 1:50~1:100 ICC/IF 1:50~1:100 IP 1:40 FC 1:50
<b>Purification</b>	Affinity-chromatography
<b>Immunogen</b>	A synthesized peptide derived from human Bim
<b>Description</b>	Bim a pro-apoptotic member of the BCL-2 protein family. Interacts with other members of the BCL-2 protein family, including BCL2, BCL2L1/BCL-X(L), and MCL1, and act as an apoptotic activator. Its expression can be induced by nerve growth factor (NGF), as well as by the forkhead transcription factor FKHR-L1, which suggests a role in neuronal and lymphocyte apoptosis.
<b>Storage Condition and Buffer</b>	Rabbit IgG in phosphate buffered saline , pH 7.4, 150mM NaCl, 0.02% sodium azide and 50% glycerol. Store at +4°C short term. Store at -20°C long term. Avoid freeze / thaw cycle.

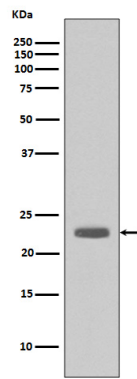
## Protein Information

<b>Name</b>	BCL2L11
<b>Synonyms</b>	BIM
<b>Function</b>	Induces apoptosis and anoikis. Isoform BimL is more potent than isoform BimEL. Isoform Bim-alpha1, isoform Bim-alpha2 and isoform Bim-alpha3 induce apoptosis, although less potent than isoform BimEL, isoform BimL and isoform BimS. Isoform Bim-gamma induces apoptosis. Isoform Bim-alpha3 induces apoptosis possibly through a caspase- mediated pathway. Isoform BimAC and isoform BimABC lack the ability to induce apoptosis.
<b>Cellular Location</b>	Endomembrane system; Peripheral membrane protein. Note=Associated with intracytoplasmic membranes. [Isoform BimL]: Mitochondrion. [Isoform Bim-alpha1]: Mitochondrion.

<b>Tissue Location</b>	Isoform BimEL, isoform BimL and isoform BimS are the predominant isoforms and are widely expressed with tissue-specific variation. Isoform Bim-gamma is most abundantly expressed in small intestine and colon, and in lower levels in spleen, prostate, testis, heart, liver and kidney.
------------------------	---

## Images

---



Western blot analysis of Bim expression in A431 cell lysate.

Image not found : 202311/AP90347-IHC.jpg	Immunohistochemical analysis of paraffin-embedded human cervix cancer, using Bim Antibody.
Image not found : 202311/AP90347-IF.jpg	Immunofluorescent analysis of Raji cells, using Bim Antibody.

Please note: All products are 'FOR RESEARCH USE ONLY. NOT FOR USE IN DIAGNOSTIC OR THERAPEUTIC PROCEDURES'.