

B Raf Antibody

Rabbit mAb

Catalog # AP90359

Product Information

Application	WB, IHC, FC, IP
Primary Accession	P15056
Reactivity	Rat, Human, Mouse
Clonality	Monoclonal
Other Names	B-RAF; p94; NS7; B-Raf proto-oncogene serine/threonine-protein kinase; BRAF; BRAF1;
Isotype	Rabbit IgG
Host	Rabbit
Calculated MW	84437

Additional Information

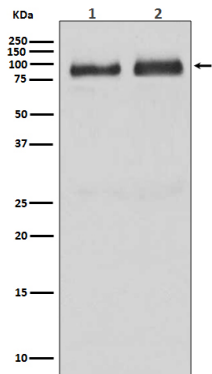
Dilution	WB 1:500~1:2000 IHC 1:50~1:200 IP 1:50 FC 1:50
Purification	Affinity-chromatography
Immunogen	A synthesized peptide derived from human B Raf
Description	Involved in the transduction of mitogenic signals from the cell membrane to the nucleus. May play a role in the postsynaptic responses of hippocampal neuron. Frequently mutated in thyroid cancers, skin melanomas and at lower frequency in a wide range of human cancers. An activating mutation, mimicking phosphorylation of the activation loop, is seen in 60% of malignant melanoma samples. Raf mutations are generally exclusive to Ras activating mutations.
Storage Condition and Buffer	Rabbit IgG in phosphate buffered saline , pH 7.4, 150mM NaCl, 0.02% sodium azide and 50% glycerol. Store at +4°C short term. Store at -20°C long term. Avoid freeze / thaw cycle.

Protein Information

Name	BRAF (HGNC:1097)
Synonyms	BRAF1, RAFB1
Function	Protein kinase involved in the transduction of mitogenic signals from the cell membrane to the nucleus (Probable). Phosphorylates MAP2K1, and thereby activates the MAP kinase signal transduction pathway (PubMed: 21441910 , PubMed: 29433126). Phosphorylates PFKFB2 (PubMed: 36402789). May play a role in the postsynaptic responses of hippocampal neurons (PubMed: 1508179).
Cellular Location	Nucleus. Cytoplasm. Cell membrane. Note=Colocalizes with RGS14 and RAF1 in both the cytoplasm and membranes.

Tissue Location Brain and testis.

Images



Western blot analysis of B Raf expression in (1)Human brain lysate (2)HepG2 cell lysate.

Image not found : 202311/AP90359-IHC.jpg

Immunohistochemical analysis of paraffin-embedded human ovarian cancer, using B Raf Antibody.

Please note: All products are 'FOR RESEARCH USE ONLY. NOT FOR USE IN DIAGNOSTIC OR THERAPEUTIC PROCEDURES'.