

Rab4 Antibody

Rabbit mAb

Catalog # AP90361

Product Information

| | |
|--------------------------|---|
| Application | WB, IF, FC, ICC |
| Primary Accession | P20338 |
| Reactivity | Rat, Human, Mouse |
| Clonality | Monoclonal |
| Other Names | Rab4 ; RAB4A; HRES 1 ;RAB4; Ras related protein Rab 4A; |
| Isotype | Rabbit IgG |
| Host | Rabbit |
| Calculated MW | 24390 |

Additional Information

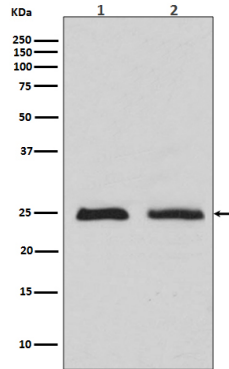
| | |
|-------------------------------------|---|
| Dilution | WB 1:500~1:2000 ICC/IF 1:50~1:200 FC 1:50 |
| Purification | Affinity-chromatography |
| Immunogen | A synthesized peptide derived from human Rab4 |
| Description | The protein encoded by this gene belongs to the rab family. Rab4A protein is involved in the regulation of procathepsin L secretion, it was either inhibited by expression of a Rab4A dominant-negative mutant or increased by overexpression of the wild-type Rab4A in human melanoma cells. |
| Storage Condition and Buffer | Rabbit IgG in phosphate buffered saline , pH 7.4, 150mM NaCl, 0.02% sodium azide and 50% glycerol. Store at +4°C short term. Store at -20°C long term. Avoid freeze / thaw cycle. |

Protein Information

| | |
|--------------------------|---|
| Name | RAB4A (HGNC:9781) |
| Synonyms | RAB4 |
| Function | The small GTPases Rab are key regulators of intracellular membrane trafficking, from the formation of transport vesicles to their fusion with membranes. Rabs cycle between an inactive GDP-bound form and an active GTP-bound form that is able to recruit to membranes different sets of downstream effectors directly responsible for vesicle formation, movement, tethering and fusion (PubMed: 15907487 , PubMed: 16034420). RAB4A is involved in protein transport (PubMed: 29425100). Also plays a role in vesicular traffic. Mediates VEGFR2 endosomal trafficking to enhance VEGFR2 signaling (PubMed: 29425100). Acts as a regulator of platelet alpha-granule release during activation and aggregation of platelets (By similarity). |
| Cellular Location | Membrane; Peripheral membrane protein. Cytoplasm Early endosome membrane {ECO:0000250 UniProtKB:P05714}; Peripheral membrane protein |

{ECO:0000250|UniProtKB:P05714}. Recycling endosome membrane
{ECO:0000250|UniProtKB:P05714}; Peripheral membrane protein
{ECO:0000250|UniProtKB:P05714}. Note=Generally associated with
membranes. Cytoplasmic when phosphorylated by CDK1

Images



Western blot analysis of Rab4 expression in (1)MCF7 cell lysates (2)HeLa cell lysate.

Image not found : 202311/AP90361-IF.jpg

Immunofluorescent analysis of Hela cells, using Rab4 Antibody .

Please note: All products are 'FOR RESEARCH USE ONLY. NOT FOR USE IN DIAGNOSTIC OR THERAPEUTIC PROCEDURES'.