

# PI 3 Kinase Class 3 Antibody

Rabbit mAb

Catalog # AP90362

## Product Information

<b>Application</b>	WB, IHC
<b>Primary Accession</b>	<a href="#">Q8NEB9</a>
<b>Reactivity</b>	Rat, Human, Mouse
<b>Clonality</b>	Monoclonal
<b>Other Names</b>	PI3-kinase type 3; PI3K type 3; PI3 kinase type 3; Phosphatidylinositol 3-kinase p100 subunit; Phosphoinositide-3-kinase class 3; hVps34; PIK3C3; Vps 34; Vps34
<b>Isotype</b>	Rabbit IgG
<b>Host</b>	Rabbit
<b>Calculated MW</b>	101549

## Additional Information

<b>Dilution</b>	WB 1:500~1:2000 IHC 1:50~1:200
<b>Purification</b>	Affinity-chromatography
<b>Immunogen</b>	A synthesized peptide derived from human PI 3 Kinase Class 3
<b>Description</b>	Catalytic subunit of the PI3K complex that mediates formation of phosphatidylinositol 3-phosphate. Involved in the transport of lysosomal enzyme precursors to lysosomes. Required for the abscission step in cytokinesis.
<b>Storage Condition and Buffer</b>	Rabbit IgG in phosphate buffered saline , pH 7.4, 150mM NaCl, 0.02% sodium azide and 50% glycerol. Store at +4°C short term. Store at -20°C long term. Avoid freeze / thaw cycle.

## Protein Information

<b>Name</b>	PIK3C3 ( <a href="#">HGNC:8974</a> )
<b>Synonyms</b>	VPS34 {ECO:0000305}
<b>Function</b>	Catalytic subunit of the PI3K complex that mediates formation of phosphatidylinositol 3-phosphate; different complex forms are believed to play a role in multiple membrane trafficking pathways: PI3KC3-C1 is involved in initiation of autophagosomes and PI3KC3-C2 in maturation of autophagosomes and endocytosis (PubMed: <a href="#">14617358</a> , PubMed: <a href="#">33637724</a> , PubMed: <a href="#">7628435</a> ). As part of PI3KC3-C1, promotes endoplasmic reticulum membrane curvature formation prior to vesicle budding (PubMed: <a href="#">32690950</a> ). Involved in regulation of degradative endocytic trafficking and required for the abscission step in cytokinesis, probably in the context of PI3KC3-C2 (PubMed: <a href="#">20208530</a> , PubMed: <a href="#">20643123</a> ). Involved in the transport of lysosomal enzyme precursors to lysosomes (By similarity). Required for

transport from early to late endosomes (By similarity).

### Cellular Location

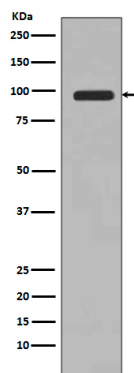
Midbody. Late endosome. Cytoplasmic vesicle, autophagosome. Note=As component of the PI3K complex I localized to pre-autophagosome structures. As component of the PI3K complex II localized predominantly to endosomes (PubMed:14617358). Also localizes to discrete punctae along the ciliary axoneme and to the base of the ciliary axoneme (By similarity) {ECO:0000250|UniProtKB:Q6PF93, ECO:0000305|PubMed:14617358}

### Tissue Location

Ubiquitously expressed, with a highest expression in skeletal muscle.

## Images

---



Western blot analysis of PI 3 Kinase Class 3 expression in 293T cell lysate.

Image not found : 202311/AP90362-IHC.jpg

Immunohistochemical analysis of paraffin-embedded human kidney, using PI 3 Kinase Class 3 Antibody.

Please note: All products are 'FOR RESEARCH USE ONLY. NOT FOR USE IN DIAGNOSTIC OR THERAPEUTIC PROCEDURES'.