

# TrkA Antibody

Rabbit mAb

Catalog # AP90370

## Product Information

|                          |  |
|--------------------------|--|
| <b>Application</b>       | WB, IHC, IF, FC, ICC, IP, IHF                  |
| <b>Primary Accession</b> | <a href="#">P04629</a>                         |
| <b>Reactivity</b>        | Rat, Human, Mouse                              |
| <b>Clonality</b>         | Monoclonal                                     |
| <b>Other Names</b>       | NTRK1; MTC; TRK; TRK1; TRKA; Trk-A; p140-TrkA; |
| <b>Isotype</b>           | Rabbit IgG                                     |
| <b>Host</b>              | Rabbit   |
| <b>Calculated MW</b>     | 87497  |

## Additional Information

|                                     |  |
|-------------------------------------|--|
| <b>Dilution</b>                     | WB 1:500~1:2000 IHC 1:50~1:200 ICC/IF 1:50~1:200 IP 1:50 FC 1:30   |
| <b>Purification</b>                 | Affinity-chromatography  |
| <b>Immunogen</b>                    | A synthesized peptide derived from human TrkA  |
| <b>Description</b>                  | The family of Trk receptor tyrosine kinases consists of TrkA, TrkB, and TrkC. While the sequence of these family members is highly conserved, they are activated by different neurotrophins: TrkA by NGF, TrkB by BDNF or NT4, and TrkC by NT3. Neurotrophin signaling through these receptors regulates a number of physiological processes, such as cell survival, proliferation, neural development, and axon and dendrite growth and patterning. |
| <b>Storage Condition and Buffer</b> | Rabbit IgG in phosphate buffered saline , pH 7.4, 150mM NaCl, 0.02% sodium azide and 50% glycerol. Store at +4°C short term. Store at -20°C long term. Avoid freeze / thaw cycle.  |

## Protein Information

|                 |   |
|-----------------|---|
| <b>Name</b>     | NTRK1   |
| <b>Function</b> | Receptor tyrosine kinase involved in the development and the maturation of the central and peripheral nervous systems through regulation of proliferation, differentiation and survival of sympathetic and nervous neurons. High affinity receptor for NGF which is its primary ligand (PubMed: <a href="#">1281417</a> , PubMed: <a href="#">15488758</a> , PubMed: <a href="#">17196528</a> , PubMed: <a href="#">1849459</a> , PubMed: <a href="#">1850821</a> , PubMed: <a href="#">22649032</a> , PubMed: <a href="#">27445338</a> , PubMed: <a href="#">8325889</a> ). Can also bind and be activated by NTF3/neurotrophin-3. However, NTF3 only supports axonal extension through NTRK1 but has no effect on neuron survival (By similarity). Upon dimeric NGF ligand-binding, undergoes homodimerization, autophosphorylation and activation (PubMed: <a href="#">1281417</a> ). Recruits, phosphorylates and/or activates several downstream effectors including SHC1, FRS2, SH2B1, SH2B2 and PLCG1 that regulate distinct overlapping signaling cascades driving cell survival and differentiation. |

Through SHC1 and FRS2 activates a GRB2-Ras-MAPK cascade that regulates cell differentiation and survival. Through PLCG1 controls NF-Kappa-B activation and the transcription of genes involved in cell survival. Through SHC1 and SH2B1 controls a Ras-PI3 kinase-AKT1 signaling cascade that is also regulating survival. In absence of ligand and activation, may promote cell death, making the survival of neurons dependent on trophic factors.

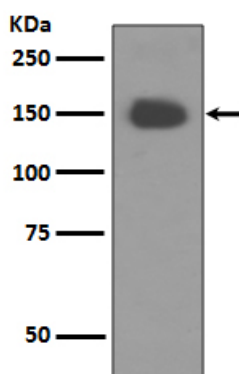
#### Cellular Location

Cell membrane; Single-pass type I membrane protein. Early endosome membrane {ECO:0000250|UniProtKB:P35739}; Single-pass type I membrane protein {ECO:0000250|UniProtKB:P35739}. Late endosome membrane {ECO:0000250|UniProtKB:P35739}; Single-pass type I membrane protein {ECO:0000250|UniProtKB:P35739}. Recycling endosome membrane {ECO:0000250|UniProtKB:P35739}; Single-pass type I membrane protein {ECO:0000250|UniProtKB:P35739}. Note=Rapidly internalized after NGF binding (PubMed:1281417). Internalized to endosomes upon binding of NGF or NTF3 and further transported to the cell body via a retrograde axonal transport. Localized at cell membrane and early endosomes before nerve growth factor (NGF) stimulation. Recruited to late endosomes after NGF stimulation. Colocalized with RAPGEF2 at late endosomes {ECO:0000250|UniProtKB:P35739, ECO:0000269|PubMed:1281417}

#### Tissue Location

Isoform TrkA-I is found in most non-neuronal tissues. Isoform TrkA-II is primarily expressed in neuronal cells TrkA-III is specifically expressed by pluripotent neural stem and neural crest progenitors.

## Images



Western blot analysis of TrkA expression in Human fetal brain tissue lysate.

Image not found : 202311/AP90370-IHC.jpg

Immunohistochemical analysis of paraffin-embedded human liver, using TrkA Antibody.

Please note: All products are 'FOR RESEARCH USE ONLY. NOT FOR USE IN DIAGNOSTIC OR THERAPEUTIC PROCEDURES'.