

Cytokeratin 20 Antibody

Rabbit mAb

Catalog # AP90371

Product Information

Application	WB, IHC, IF, FC, ICC, IP, IHF
Primary Accession	P35900
Reactivity	Rat, Human
Clonality	Monoclonal
Other Names	CD20; CK-20; CK20; cytokeratin 20; Cytokeratin-20; K1C20; K20; keratin 20; Keratin, type I cytoskeletal 20; Keratin-20; KRT20; KRT21; MGC35423; Protein IT;
Isotype	Rabbit IgG
Host	Rabbit
Calculated MW	48487

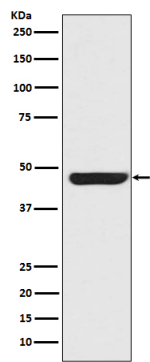
Additional Information

Dilution	WB 1:500~1:2000 IHC 1:50~1:200 ICC/IF 1:50~1:200 IP 1:30 FC 1:50
Purification	Affinity-chromatography
Immunogen	A synthesized peptide derived from human Cytokeratin 20
Description	Intermediate-sized filament (IF) protein designated cytokeratin (CK) 20 is a major cellular protein of mature enterocytes and goblet cells commonly found in mucosal epithelium of the mammalian gastrointestinal tract. Results strongly suggest that transcriptional regulation of keratin genes in the intestinal epithelium occurs at the level of both immature and terminally differentiated epithelial cells, and is tightly regulated during both fetal development and crypt-to-villus differentiation of the intestinal epithelium.
Storage Condition and Buffer	Rabbit IgG in phosphate buffered saline , pH 7.4, 150mM NaCl, 0.02% sodium azide and 50% glycerol. Store at +4°C short term. Store at -20°C long term. Avoid freeze / thaw cycle.

Protein Information

Name	KRT20
Function	Plays a significant role in maintaining keratin filament organization in intestinal epithelia. When phosphorylated, plays a role in the secretion of mucin in the small intestine (By similarity).
Cellular Location	Cytoplasm
Tissue Location	Expressed predominantly in the intestinal epithelium. Expressed in luminal cells of colonic mucosa. Also expressed in the Merkel cells of keratinized oral mucosa; specifically at the tips of some rete ridges of the gingival mucosa, in the basal layer of the palatal mucosa and in the taste buds of lingual mucosa

Images



Western blot analysis of Cytokeratin 20 expression in SW480 cell lysate.

Image not found : 202311/AP90371-IHC.jpg

Immunohistochemical analysis of paraffin-embedded human colon, using Cytokeratin 20 Antibody.

Image not found : 202311/AP90371-IF.jpg

Immunofluorescent analysis of Hela cells, using Cytokeratin 20 Antibody .

Please note: All products are 'FOR RESEARCH USE ONLY. NOT FOR USE IN DIAGNOSTIC OR THERAPEUTIC PROCEDURES'.