

# Osteopontin Antibody

Rabbit mAb

Catalog # AP90372

## Product Information

---

<b>Application</b>	WB, IHC, IF, FC, ICC, IHF
<b>Primary Accession</b>	<a href="#">P10451</a>
<b>Reactivity</b>	Human, Mouse
<b>Clonality</b>	Monoclonal
<b>Other Names</b>	BNSP; Bone sialoprotein 1; bone sialoprotein I; BSPI; early T-lymphocyte activation 1; ETA-1; Nephropontin; OPN; Osteopontin; OSTP; Secreted phosphoprotein 1;
<b>Isotype</b>	Rabbit IgG
<b>Host</b>	Rabbit
<b>Calculated MW</b>	35 KDa

## Additional Information

---

<b>Dilution</b>	WB 1:500~1:2000 IHC 1:50~1:200 ICC/IF 1:50~1:200 FC 1:30
<b>Purification</b>	Affinity-chromatography
<b>Immunogen</b>	A synthesized peptide derived from human Osteopontin
<b>Description</b>	osteopontin Binds tightly to hydroxyapatite. Appears to form an integral part of the mineralized matrix. Probably important to cell-matrix interaction. Belongs to the osteopontin family. Ligand for integrin alpha-V/beta-3. 4 isoforms of the human protein are produced by alternative splicing.
<b>Storage Condition and Buffer</b>	Rabbit IgG in phosphate buffered saline , pH 7.4, 150mM NaCl, 0.02% sodium azide and 50% glycerol. Store at +4°C short term. Store at -20°C long term. Avoid freeze / thaw cycle.

## Protein Information

---

## Images

---

Western blot analysis of Osteopontin expression in HepG2 cell lysate.

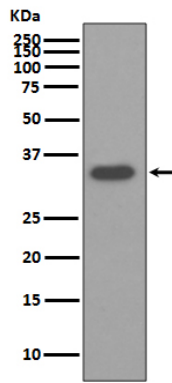


Image not found : 202311/AP90372-IHC.jpg

Prostaglandin E1 Inhibited Diabetes-Induced Phenotypic Switching of Vascular Smooth Muscle Cells Through Activating Autophagy. -Cellular Physiology and Biochemistry

Please note: All products are 'FOR RESEARCH USE ONLY. NOT FOR USE IN DIAGNOSTIC OR THERAPEUTIC PROCEDURES'.