

# CCR7 Antibody

Rabbit mAb

Catalog # AP90382

## Product Information

<b>Application</b>	WB, IHC, IF, ICC, IP, IHF
<b>Primary Accession</b>	<a href="#">P32248</a>
<b>Reactivity</b>	Rat, Human, Mouse
<b>Clonality</b>	Monoclonal
<b>Other Names</b>	Synonyms C-C CKR-7; CC-CKR-7; MIP-3 beta receptor; EB-induced G-protein coupled receptor 1; EBI1; BLR2; CD197 antigen; CDw197; Gene name Name: CCR7; CMKBR7; EBI1; EVI1;
<b>Isotype</b>	Rabbit IgG
<b>Host</b>	Rabbit
<b>Calculated MW</b>	42874

## Additional Information

<b>Dilution</b>	WB 1:500~1:2000 IHC 1:50~1:200 ICC/IF 1:50~1:200 IP 1:50
<b>Purification</b>	Affinity-chromatography
<b>Immunogen</b>	A synthesized peptide derived from human CCR7
<b>Description</b>	The protein encoded by this gene is a member of the G protein-coupled receptor family. This receptor was identified as a gene induced by the Epstein-Barr virus (EBV), and is thought to be a mediator of EBV effects on B lymphocytes. This receptor is expressed in various lymphoid tissues and activates B and T lymphocytes. It has been shown to control the migration of memory T cells to inflamed tissues, as well as stimulate dendritic cell maturation. The chemokine (C-C motif) ligand 19 (CCL19/ECL) has been reported to be a specific ligand of this receptor.
<b>Storage Condition and Buffer</b>	Rabbit IgG in phosphate buffered saline , pH 7.4, 150mM NaCl, 0.02% sodium azide and 50% glycerol. Store at +4°C short term. Store at -20°C long term. Avoid freeze / thaw cycle.

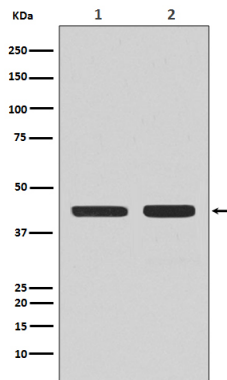
## Protein Information

<b>Name</b>	CCR7
<b>Synonyms</b>	CMKBR7, EBI1, EVI1
<b>Function</b>	Receptor for the MIP-3-beta chemokine. Probable mediator of EBV effects on B-lymphocytes or of normal lymphocyte functions.
<b>Cellular Location</b>	Cell membrane; Multi-pass membrane protein.
<b>Tissue Location</b>	Expressed in various lymphoid tissues and activated B- and T-lymphocytes, strongly up-regulated in B-cells infected with Epstein-Barr virus and T-cells

infected with herpesvirus 6 or 7

## Images

---



Western blot analysis of CCR7 expression in (1) Daudi cell lysate; (2) MCF-7 cell lysate.

Image not found : 202311/AP90382-IHC.jpg

Immunohistochemical analysis of paraffin-embedded human spleen, using CCR7 Antibody.

Image not found : 202311/AP90382-IF.jpg

Immunofluorescent analysis of Hela cells, using CCR7 Antibody .

Please note: All products are 'FOR RESEARCH USE ONLY. NOT FOR USE IN DIAGNOSTIC OR THERAPEUTIC PROCEDURES'.