

STAT6 Antibody

Rabbit mAb

Catalog # AP90390

Product Information

Application	WB, IHC, IF, ICC, IP, IHF
Primary Accession	P42226
Reactivity	Human, Mouse
Clonality	Monoclonal
Other Names	IL-4-STAT; Signal transducer and activator of transcription 6; interleukin-4 induced; STAT, interleukin4-induced; STAT6; STAT6B; STAT6C; transcription factor IL-4 STAT
Isotype	Rabbit IgG
Host	Rabbit
Calculated MW	94135

Additional Information

Dilution	WB 1:500~1:2000 IHC 1:50~1:200 ICC/IF 1:50~1:200 IP 1:50
Purification	Affinity-chromatography
Immunogen	A synthesized peptide derived from human STAT6
Description	STAT6 transcription factor of the STAT family. Plays a central role in IL4-mediated biological responses. Induces the expression of BCL2L1/BCL-X(L), which is responsible for the anti-apoptotic activity of IL4.
Storage Condition and Buffer	Rabbit IgG in phosphate buffered saline , pH 7.4, 150mM NaCl, 0.02% sodium azide and 50% glycerol. Store at +4°C short term. Store at -20°C long term. Avoid freeze / thaw cycle.

Protein Information

Name	STAT6
Function	Carries out a dual function: signal transduction and activation of transcription. Involved in IL4/interleukin-4- and IL3/interleukin-3-mediated signaling.
Cellular Location	Cytoplasm. Nucleus. Note=Translocated into the nucleus in response to phosphorylation

Images

Western blot analysis of STAT6 expression in Raji cell lysate.

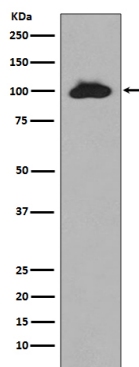


Image not found : 202311/AP90390-IHC.jpg

Immunohistochemical analysis of paraffin-embedded rat liver, using STAT6 Antibody.

Image not found : 202311/AP90390-IF.jpg

Immunofluorescent analysis of Hela cells, using STAT6 Antibody .

Please note: All products are 'FOR RESEARCH USE ONLY. NOT FOR USE IN DIAGNOSTIC OR THERAPEUTIC PROCEDURES'.