

# C Reactive Protein Antibody

Rabbit mAb

Catalog # AP90391

## Product Information

---

<b>Application</b>	WB, IHC, IP
<b>Primary Accession</b>	<a href="#">P02741</a>
<b>Reactivity</b>	Human
<b>Clonality</b>	Monoclonal
<b>Other Names</b>	CRP; Pentraxin 1; PTX1; C reactive protein pentraxin related;
<b>Isotype</b>	Rabbit IgG
<b>Host</b>	Rabbit
<b>Calculated MW</b>	25039

## Additional Information

---

<b>Dilution</b>	WB 1:1000~1:2000 IHC 1:500~1:1000 IP 1:50
<b>Purification</b>	Affinity-chromatography
<b>Immunogen</b>	A synthesized peptide derived from human C Reactive Protein
<b>Description</b>	Serum CRP values are routinely measured to detect or monitor many human diseases and minor elevations of C-reactive protein are predictive of cardiovascular events in patients with coronary heart disease. CRP promotes host defense, is an efficient activator of the classical C cascade, and shown to be opsonic. The opsonic and C activation activities are responsible for the nonspecific host defense activities providing protection in the preimmune stage of acute infections.
<b>Storage Condition and Buffer</b>	Rabbit IgG in phosphate buffered saline , pH 7.4, 150mM NaCl, 0.02% sodium azide and 50% glycerol. Store at +4°C short term. Store at -20°C long term. Avoid freeze / thaw cycle.

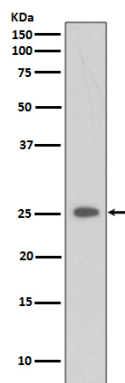
## Protein Information

---

<b>Name</b>	CRP
<b>Synonyms</b>	PTX1
<b>Function</b>	Displays several functions associated with host defense: it promotes agglutination, bacterial capsular swelling, phagocytosis and complement fixation through its calcium-dependent binding to phosphorylcholine. Can interact with DNA and histones and may scavenge nuclear material released from damaged circulating cells.
<b>Cellular Location</b>	Secreted.
<b>Tissue Location</b>	Found in plasma.

## Images

---



Western blot analysis of CRP expression in Etoposide treated 293 whole cell lysates.

Image not found : 202311/AP90391-IHC.jpg

Immunohistochemical analysis of paraffin-embedded human liver, using C Reactive Protein Antibody.

Please note: All products are 'FOR RESEARCH USE ONLY. NOT FOR USE IN DIAGNOSTIC OR THERAPEUTIC PROCEDURES'.