

p16 INK Antibody

Rabbit mAb

Catalog # AP90396

Product Information

Application	WB, IHC, IF, FC, ICC, IP, IHF
Primary Accession	P42771
Reactivity	Human
Clonality	Monoclonal
Other Names	CDKN2A; CDKN2; MTS1; isoforms 1/2/3; Cyclin-dependent kinase 4 inhibitor A; CDK4I; P16INK4; p16INK4a; Multiple tumor suppressor 1;
Isotype	Rabbit IgG
Host	Rabbit
Calculated MW	16533

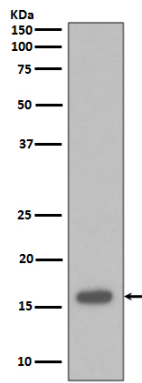
Additional Information

Dilution	WB 1:500~1:2000 IHC 1:50~1:200 ICC/IF 1:50~1:200 IP 1:30 FC 1:100
Purification	Affinity-chromatography
Immunogen	A synthesized peptide derived from human p16 INK
Description	p16-INK4A a cell-cycle regulatory protein that Interacts with CDK4 and CDK6, inhibiting their ability to interact with cyclins D. Inhibits the phosphorylation of the retinoblastoma protein by CDK4 or CDK6. Four alternatively spliced isoforms have been reported.
Storage Condition and Buffer	Rabbit IgG in phosphate buffered saline , pH 7.4, 150mM NaCl, 0.02% sodium azide and 50% glycerol. Store at +4°C short term. Store at -20°C long term. Avoid freeze / thaw cycle.

Protein Information

Name	CDKN2A (HGNC:1787)
Synonyms	CDKN2, MTS1
Function	Acts as a negative regulator of the proliferation of normal cells by interacting strongly with CDK4 and CDK6. This inhibits their ability to interact with cyclins D and to phosphorylate the retinoblastoma protein.
Cellular Location	Cytoplasm. Nucleus
Tissue Location	Widely expressed but not detected in brain or skeletal muscle. Isoform 3 is pancreas-specific

Images



Western blot analysis of p16 INK expression in 293T cell lysate.

Image not found : 202311/AP90396-IHC.jpg

Immunohistochemical analysis of paraffin-embedded human gastric, using p16 INK Antibody.

Please note: All products are 'FOR RESEARCH USE ONLY. NOT FOR USE IN DIAGNOSTIC OR THERAPEUTIC PROCEDURES'.