

Bad Antibody

Rabbit mAb

Catalog # AP90405

Product Information

Application	WB, IHC, IF, FC, ICC, IP, IHF
Primary Accession	Q92934
Reactivity	Rat, Human, Mouse
Clonality	Monoclonal
Other Names	BAD; BBC6; BCL2L8; Bcl- XL/Bcl-2 associated death promoter; Bcl-2 binding component 6; Bcl-2-like 8 protein; Bcl-xL/Bcl-2 associated death promoter;
Isotype	Rabbit IgG
Host	Rabbit
Calculated MW	18392

Additional Information

Dilution	WB 1:1000~1:2000 IHC 1:50~1:200 ICC/IF 1:50~1:200 IP 1:30 FC 1:50
Purification	Affinity-chromatography
Immunogen	A synthesized peptide derived from human Bad
Description	Promotes cell death. Successfully competes for the binding to Bcl-X(L), Bcl-2 and Bcl-W, thereby affecting the level of heterodimerization of these proteins with BAX. Can reverse the death repressor activity of Bcl-X(L), but not that of Bcl-2 (By similarity). Appears to act as a link between growth factor receptor signaling and the apoptotic pathways.
Storage Condition and Buffer	Rabbit IgG in phosphate buffered saline , pH 7.4, 150mM NaCl, 0.02% sodium azide and 50% glycerol. Store at +4°C short term. Store at -20°C long term. Avoid freeze / thaw cycle.

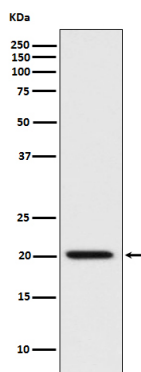
Protein Information

Name	BAD
Synonyms	BBC6, BCL2L8
Function	Promotes cell death. Successfully competes for the binding to Bcl-X(L), Bcl-2 and Bcl-W, thereby affecting the level of heterodimerization of these proteins with BAX. Can reverse the death repressor activity of Bcl-X(L), but not that of Bcl-2 (By similarity). Appears to act as a link between growth factor receptor signaling and the apoptotic pathways.
Cellular Location	Mitochondrion outer membrane. Cytoplasm {ECO:0000250 UniProtKB:Q61337}. Note=Colocalizes with HIF3A in the cytoplasm (By similarity). Upon phosphorylation, locates to the cytoplasm. {ECO:0000250 UniProtKB:Q61337}

Tissue Location

Expressed in a wide variety of tissues.

Images



Western blot analysis of BAD expression in HeLa cell lysate.

Image not found : 202311/AP90405-IHC.jpg

Immunohistochemical analysis of paraffin-embedded human colon cancer, using Bad Antibody.

Image not found : 202311/AP90405-IF.jpg

Immunofluorescent analysis of HeLa cells, using Bad Antibody .

Please note: All products are 'FOR RESEARCH USE ONLY. NOT FOR USE IN DIAGNOSTIC OR THERAPEUTIC PROCEDURES'.