

MMP12 Antibody

Rabbit mAb

Catalog # AP90407

Product Information

Application	WB
Primary Accession	P39900
Reactivity	Human
Clonality	Monoclonal
Other Names	Macrophage metalloelastase; MME; 3.4.24.65; Macrophage elastase; ME; hME; Matrix metalloproteinase-12; MMP-12; MMP12; HME;
Isotype	Rabbit IgG
Host	Rabbit
Calculated MW	54002

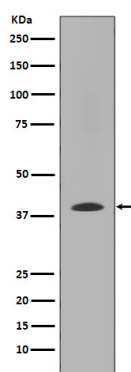
Additional Information

Dilution	WB 1:1000~1:2000
Purification	Affinity-chromatography
Immunogen	A synthesized peptide derived from human MMP12
Description	MMP-12 lacks a transmembrane domain and furin cleavage site. The zymogen for MMP-12 is about 54 kDa, and is quickly activated to the 45 kDa form, and this breaks down to cascade of active forms, ending with the common 22 kDa form. Stimulated macrophages produce MMP-12; it has also been found in osteosarcoma cells, synovial fibroblasts and lung fibroblasts.
Storage Condition and Buffer	Rabbit IgG in phosphate buffered saline , pH 7.4, 150mM NaCl, 0.02% sodium azide and 50% glycerol. Store at +4°C short term. Store at -20°C long term. Avoid freeze / thaw cycle.

Protein Information

Name	MMP12
Synonyms	HME
Function	May be involved in tissue injury and remodeling. Has significant elastolytic activity. Can accept large and small amino acids at the P1' site, but has a preference for leucine. Aromatic or hydrophobic residues are preferred at the P1 site, with small hydrophobic residues (preferably alanine) occupying P3.
Cellular Location	Secreted, extracellular space, extracellular matrix
Tissue Location	Found in alveolar macrophages but not in peripheral blood monocytes

Images



Western blot analysis of MMP12 expression in WI-38 cell lysate.

Please note: All products are 'FOR RESEARCH USE ONLY. NOT FOR USE IN DIAGNOSTIC OR THERAPEUTIC PROCEDURES'.