

ABCG1 Antibody

Rabbit mAb

Catalog # AP90410

Product Information

Application	WB, IHC, IF, ICC, IHF
Primary Accession	P45844
Reactivity	Rat, Human
Clonality	Monoclonal
Other Names	ATP-binding cassette transporter 8; White protein homolog; ABC8; WHT1;ABCG1; ABC transporter 8; WHITE1;
Isotype	Rabbit IgG
Host	Rabbit
Calculated MW	75592

Additional Information

Dilution	WB 1:500~1:1000 IHC 1:50~1:100 ICC/IF 1:50~1:100
Purification	Affinity-chromatography
Immunogen	A synthesized peptide derived from human ABCG1
Description	Functions to regulate cholesterol and phospholipid transport in macrophages. ABCG1 is highly expressed in several tissues, including brain, spleen, lung and placenta, and has been localized to the cell surface and intracellular compartments of cholesterol-laden macrophages.
Storage Condition and Buffer	Rabbit IgG in phosphate buffered saline , pH 7.4, 150mM NaCl, 0.02% sodium azide and 50% glycerol. Store at +4°C short term. Store at -20°C long term. Avoid freeze / thaw cycle.

Protein Information

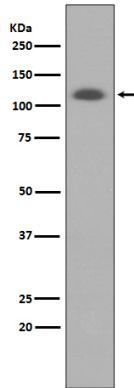
Name	ABCG1 (HGNC:73)
Synonyms	ABC8, WHT1
Function	Catalyzes the efflux of phospholipids such as sphingomyelin, cholesterol and its oxygenated derivatives like 7beta- hydroxycholesterol and this transport is coupled to hydrolysis of ATP (PubMed: 17408620 , PubMed: 24576892). The lipid efflux is ALB-dependent (PubMed: 16702602). Is an active component of the macrophage lipid export complex. Could also be involved in intracellular lipid transport processes. The role in cellular lipid homeostasis may not be limited to macrophages. Prevents cell death by transporting cytotoxic 7beta-hydroxycholesterol (PubMed: 17408620).
Cellular Location	Endoplasmic reticulum membrane; Multi-pass membrane protein. Golgi apparatus membrane; Multi-pass membrane protein. Cell membrane Note=Predominantly localized in the intracellular compartments mainly

associated with the endoplasmic reticulum (ER) and Golgi membranes

Tissue Location

Expressed in several tissues. Expressed in macrophages; expression is increased in macrophages from patients with Tangier disease.

Images



Western blot analysis of ABCG1 expression in HUVEC cell lysate.

Please note: All products are 'FOR RESEARCH USE ONLY. NOT FOR USE IN DIAGNOSTIC OR THERAPEUTIC PROCEDURES'.