

DARPP32 Antibody

Rabbit mAb

Catalog # AP90412

Product Information

| | |
|--------------------------|---|
| Application | WB, IHC, IF, ICC, IP, IHF |
| Primary Accession | Q9UD71 |
| Reactivity | Rat, Human, Mouse |
| Clonality | Monoclonal |
| Other Names | DARPP32; PPP1R1B; PPR1B; Protein phosphatase 1 regulatory subunit 1B; |
| Isotype | Rabbit IgG |
| Host | Rabbit |
| Calculated MW | 22963 |

Additional Information

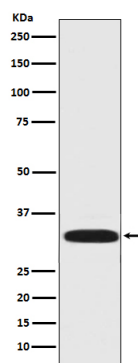
| | |
|-------------------------------------|--|
| Dilution | WB 1:1000~1:2000 IHC 1:50~1:200 ICC/IF 1:50~1:100 IP 1:20 |
| Purification | Affinity-chromatography |
| Immunogen | A synthesized peptide derived from human DARPP32 |
| Description | DARPP-32 a member of the protein phosphatase inhibitor 1 family. A dopamine- and cyclic AMP-regulated neuronal phosphoprotein. Both dopaminergic and glutamatergic (NMDA) receptor stimulation regulate the extent of DARPP32 phosphorylation, but in opposite directions. |
| Storage Condition and Buffer | Rabbit IgG in phosphate buffered saline , pH 7.4, 150mM NaCl, 0.02% sodium azide and 50% glycerol. Store at +4°C short term. Store at -20°C long term. Avoid freeze / thaw cycle. |

Protein Information

| | |
|--------------------------|-------------------------------------|
| Name | PPP1R1B |
| Synonyms | DARPP32 |
| Function | Inhibitor of protein-phosphatase 1. |
| Cellular Location | Cytoplasm. |

Images

Western blot analysis of DARPP-32 expression in Rat brain lysate.



Please note: All products are 'FOR RESEARCH USE ONLY. NOT FOR USE IN DIAGNOSTIC OR THERAPEUTIC PROCEDURES'.