

Cyclin B1 Antibody

Rabbit mAb

Catalog # AP90415

Product Information

Application	WB, IHC, IF, FC, ICC, IP, IHF
Primary Accession	P14635
Reactivity	Human
Clonality	Monoclonal
Other Names	CCN-2; CCNB; CCNB1; CCNB1-RS1; CYCB; CYCB1; G2/mitotic-specific cyclin B1;
Isotype	Rabbit IgG
Host	Rabbit
Calculated MW	48337

Additional Information

Dilution	WB 1:1000~1:2000 IHC 1:50~1:200 ICC/IF 1:50~1:200 IP 1:50 FC 1:30
Purification	Affinity-chromatography
Immunogen	A synthesized peptide derived from human Cyclin B1
Description	Essential for the control of the cell cycle at the G2/M (mitosis) transition. a member of the highly conserved cyclin family, whose members are characterized by a dramatic periodicity in protein abundance through the cell cycle. Cyclins function as regulators of CDK kinases.
Storage Condition and Buffer	Rabbit IgG in phosphate buffered saline , pH 7.4, 150mM NaCl, 0.02% sodium azide and 50% glycerol. Store at +4°C short term. Store at -20°C long term. Avoid freeze / thaw cycle.

Protein Information

Name	CCNB1
Synonyms	CCNB
Function	Essential for the control of the cell cycle at the G2/M (mitosis) transition.
Cellular Location	Cytoplasm. Nucleus. Cytoplasm, cytoskeleton, microtubule organizing center, centrosome

Images

Western blot analysis of Cyclin B1 expression in (1)HaCaT cell lysates; (2)HepG2 cell lysate.

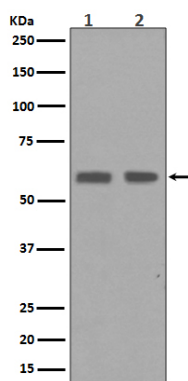


Image not found : 202311/AP90415-IHC.jpg

Immunohistochemical analysis of paraffin-embedded human breast cancer, using Cyclin B1 Antibody.

Please note: All products are 'FOR RESEARCH USE ONLY. NOT FOR USE IN DIAGNOSTIC OR THERAPEUTIC PROCEDURES'.