

Cytokeratin 15 Antibody

Rabbit mAb

Catalog # AP90424

Product Information

Application	WB, IHC, IF, FC, ICC, IHF
Primary Accession	P19012
Reactivity	Human, Mouse
Clonality	Monoclonal
Other Names	CK-15; CK15; cytokeratin15; K15; K1C15; K1CO; keratin 15; Keratin-15; keratin-15, beta; KRT15; KRTB; type I cytoskeletal 15;
Isotype	Rabbit IgG
Host	Rabbit
Calculated MW	49212

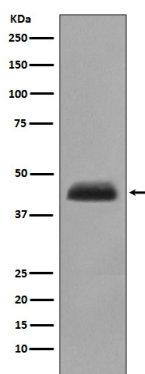
Additional Information

Dilution	WB 1:1000~1:2000 IHC 1:50~1:200 ICC/IF 1:50~1:200 FC 1:50
Purification	Affinity-chromatography
Immunogen	A synthesized peptide derived from human Cytokeratin 15
Description	The keratins are intermediate filament proteins responsible for the structural integrity of epithelial cells and are subdivided into cytokeratins and hair keratins. There are two types of cytoskeletal and microfibrillar keratin: type I (acidic; 40-55 kDa) [K9 to K20] and type II (neutral to basic; 56-70 kDa) [K1 to K8]. Both a basic and an acidic keratin are required for filament assembly. Note: This description may include information from UniProtKB.
Storage Condition and Buffer	Rabbit IgG in phosphate buffered saline , pH 7.4, 150mM NaCl, 0.02% sodium azide and 50% glycerol. Store at +4°C short term. Store at -20°C long term. Avoid freeze / thaw cycle.

Protein Information

Name	KRT15
Synonyms	KRTB
Tissue Location	Expressed in a discontinuous manner in the basal cell layer of adult skin epidermis, but continuously in the basal layer of fetal skin epidermis and nail. Also expressed in the outer root sheath above the hair bulb in hair follicle (at protein level) Expressed homogeneously in all cell layers of the esophagus and exocervix, but detected in the basal cell layer only of oral mucosa, skin and in the basal plus the next two layers of the suprabasal epithelium of the palate.

Images



Western blot analysis of Cytokeratin 15 expression in human fetal thymus lysate.

Please note: All products are 'FOR RESEARCH USE ONLY. NOT FOR USE IN DIAGNOSTIC OR THERAPEUTIC PROCEDURES'.