

# Transferrin Antibody

Rabbit mAb

Catalog # AP90430

## Product Information

<b>Application</b>	WB, IHC, FC
<b>Primary Accession</b>	<a href="#">P02787</a>
<b>Reactivity</b>	Human
<b>Clonality</b>	Monoclonal
<b>Other Names</b>	TFQTL1; TF; TRFE; Transferrin; Serotransferrin; Serotransferrin;
<b>Isotype</b>	Rabbit IgG
<b>Host</b>	Rabbit
<b>Calculated MW</b>	77064

## Additional Information

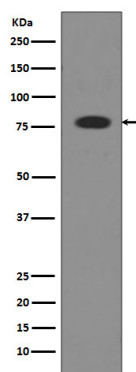
<b>Dilution</b>	WB 1:500~1:2000 IHC 1:50~1:200 FC 1:50
<b>Purification</b>	Affinity-chromatography
<b>Immunogen</b>	A synthesized peptide derived from human Transferrin
<b>Description</b>	Transferrins are iron binding transport proteins which can bind two Fe <sup>3+</sup> ions in association with the binding of an anion, usually bicarbonate. It is responsible for the transport of iron from sites of absorption and heme degradation to those of storage and utilization. Serum transferrin may also have a further role in stimulating cell proliferation.
<b>Storage Condition and Buffer</b>	Rabbit IgG in phosphate buffered saline , pH 7.4, 150mM NaCl, 0.02% sodium azide and 50% glycerol. Store at +4°C short term. Store at -20°C long term. Avoid freeze / thaw cycle.

## Protein Information

<b>Name</b>	TF ( <a href="#">HGNC:11740</a> )
<b>Function</b>	Transferrins are iron binding transport proteins which can bind two Fe(3+) ions in association with the binding of an anion, usually bicarbonate. It is responsible for the transport of iron from sites of absorption and heme degradation to those of storage and utilization. Serum transferrin may also have a further role in stimulating cell proliferation. (Microbial infection) Serves as an iron source for parasite T.brucei (strain 427), which capture TF via its own transferrin receptor ESAG6:ESAG7 and extract its iron for its own use.
<b>Cellular Location</b>	Secreted.
<b>Tissue Location</b>	Expressed by the liver and secreted in plasma.

## Images

---



Western blot analysis of Transferrin expression in Human serum lysate.

Image not found : 202311/AP90430-IHC.jpg

Immunohistochemical analysis of paraffin-embedded Human breast carcinoma, using Transferrin Antibody.

Please note: All products are 'FOR RESEARCH USE ONLY. NOT FOR USE IN DIAGNOSTIC OR THERAPEUTIC PROCEDURES'.