

# Firefly Luciferase Antibody

Rabbit mAb

Catalog # AP90433

## Product Information

---

<b>Application</b>	WB, IF, ICC
<b>Primary Accession</b>	<a href="#">P08659</a>
<b>Clonality</b>	Monoclonal
<b>Other Names</b>	Luciferase; Firefly; Luciferin 4 monooxygenase;
<b>Isotype</b>	Rabbit IgG
<b>Host</b>	Rabbit
<b>Calculated MW</b>	60745

## Additional Information

---

<b>Dilution</b>	WB 1:500~1:2000 ICC/IF 1:50~1:200
<b>Purification</b>	Affinity-chromatography
<b>Immunogen</b>	A synthesized peptide derived from Firefly Luciferase
<b>Description</b>	Produces green light with a wavelength of 562 nm. Luciferase from the firefly has become one of the more widely used reporter proteins for the study of gene expression. Luciferase catalyzes a bioluminescent reaction which requires the substrate luciferin as well as Mg <sup>2+</sup> and ATP. Mixing these reagents with the cell extract containing luciferase, results in a flash of light that decays rapidly. This light can be detected by a luminometer. The total light emission is proportional to the luciferase activity of the sample.
<b>Storage Condition and Buffer</b>	Rabbit IgG in phosphate buffered saline , pH 7.4, 150mM NaCl, 0.02% sodium azide and 50% glycerol. Store at +4°C short term. Store at -20°C long term. Avoid freeze / thaw cycle.

## Protein Information

---

<b>Name</b>	LUCI
<b>Function</b>	Produces green light with a wavelength of 562 nm.
<b>Cellular Location</b>	Peroxisome.

## Images

---

Western blot analysis of Firefly Luciferase Antibody - N-terminal expression in (1) Firefly Luciferase transfected 293T cell lysate; (2) HeLa cell lysate; (3) NIH/3T3 cell lysate; (4) C6 cell lysate.

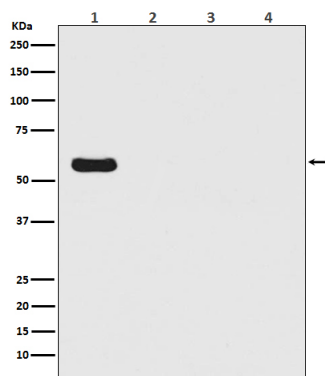


Image not found : 202311/AP90433-IF.jpg

Immunofluorescent analysis of 293 cells transfected with Firefly Luciferase, using Firefly Luciferase Antibody .

Please note: All products are 'FOR RESEARCH USE ONLY. NOT FOR USE IN DIAGNOSTIC OR THERAPEUTIC PROCEDURES'.