

Firefly Luciferase Antibody

Rabbit mAb

Catalog # AP90434

Product Information

Application	WB, IF, ICC
Primary Accession	P08659
Clonality	Monoclonal
Other Names	Luciferase; Firefly; Luciferin 4 monooxygenase;
Isotype	Rabbit IgG
Host	Rabbit
Calculated MW	60745

Additional Information

Dilution	WB 1:1000~1:5000 ICC/IF 1:50~1:200
Purification	Affinity-chromatography
Immunogen	A synthesized peptide derived from Firefly Luciferase
Description	Produces green light with a wavelength of 562 nm. Luciferase from the firefly has become one of the more widely used reporter proteins for the study of gene expression. Luciferase catalyzes a bioluminescent reaction which requires the substrate luciferin as well as Mg ²⁺ and ATP. Mixing these reagents with the cell extract containing luciferase, results in a flash of light that decays rapidly. This light can be detected by a luminometer. The total light emission is proportional to the luciferase activity of the sample.
Storage Condition and Buffer	Rabbit IgG in phosphate buffered saline , pH 7.4, 150mM NaCl, 0.02% sodium azide and 50% glycerol. Store at +4°C short term. Store at -20°C long term. Avoid freeze / thaw cycle.

Protein Information

Name	LUCI
Function	Produces green light with a wavelength of 562 nm.
Cellular Location	Peroxisome.

Images

Western blot analysis of Firefly Luciferase Antibody expression in (1) Firefly Luciferase transfected 293T cell lysate; (2) HeLa cell lysate; (3) NIH/3T3 cell lysate; (4) C6 cell lysate.

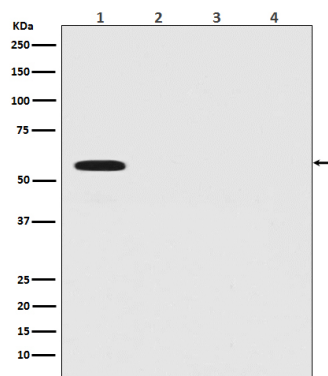


Image not found : 202311/AP90434-IF.jpg

Immunofluorescent analysis of 293 cells transfected with Firefly Luciferase, using Firefly Luciferase Antibody .

Please note: All products are 'FOR RESEARCH USE ONLY. NOT FOR USE IN DIAGNOSTIC OR THERAPEUTIC PROCEDURES'.