

CARD6 Antibody (Center)

Affinity Purified Rabbit Polyclonal Antibody (Pab)

Catalog # AP9043c

Product Information

Application	WB, IHC-P, E
Primary Accession	Q9BX69
Reactivity	Human
Host	Rabbit
Clonality	Polyclonal
Isotype	Rabbit IgG
Calculated MW	116468
Antigen Region	755-787

Additional Information

Gene ID	84674
Other Names	Caspase recruitment domain-containing protein 6, CARD6
Target/Specificity	This CARD6 antibody is generated from rabbits immunized with a KLH conjugated synthetic peptide selected from the Center region of human CARD6.
Dilution	WB~~1:1000 IHC-P~~1:100~500 E~~Use at an assay dependent concentration.
Format	Purified polyclonal antibody supplied in PBS with 0.09% (W/V) sodium azide. This antibody is purified through a protein A column, followed by peptide affinity purification.
Storage	Maintain refrigerated at 2-8°C for up to 2 weeks. For long term storage store at -20°C in small aliquots to prevent freeze-thaw cycles.
Precautions	CARD6 Antibody (Center) is for research use only and not for use in diagnostic or therapeutic procedures.

Protein Information

Name	CARD6
Function	May be involved in apoptosis.

Background

CARD6 is a protein that contains a caspase recruitment domain (CARD), an antiparallel six-helical bundle

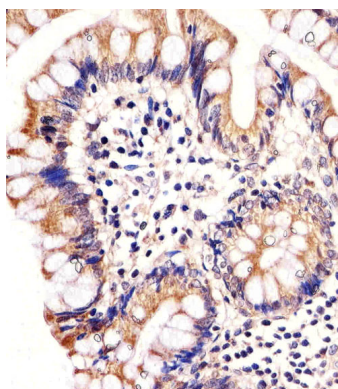
that mediates homotypic protein-protein interactions. The encoded protein is a microtubule-associated protein that has been shown to interact with receptor-interacting protein kinases and positively modulate signal transduction pathways converging on activation of the inducible transcription factor NF- κ B.

References

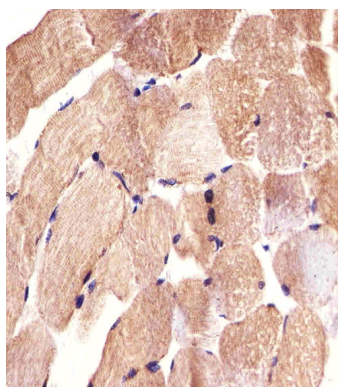
Kim,S.S., et.al., Pathology 42 (1), 50-53 (2010)

Olsen,J.V., et.al., Cell 127 (3), 635-648 (2006)

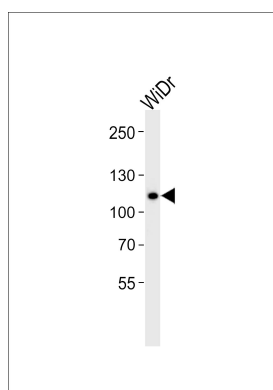
Images



Immunohistochemical analysis of paraffin-embedded H. colon section using CARD6 Antibody (Center)(Cat#AP9043c). AP9043c was diluted at 1:25 dilution. A undiluted biotinylated goat polyvalent antibody was used as the secondary, followed by DAB staining.

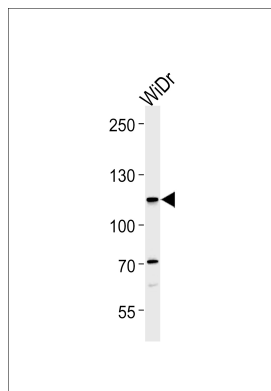


Immunohistochemical analysis of paraffin-embedded H. skeletal muscle section using CARD6 Antibody (Center)(Cat#AP9043c). AP9043c was diluted at 1:25 dilution. A undiluted biotinylated goat polyvalent antibody was used as the secondary, followed by DAB staining.



Western blot analysis of lysate from WiDr cell line, using CARD6 Antibody (Center)(Cat. #AP9043c). AP9043c was diluted at 1:1000. A goat anti-rabbit IgG H&L(HRP) at 1:5000 dilution was used as the secondary antibody. Lysate at 20 μ g.

CARD6 Antibody (Center) (Cat. #AP9043c) western blot analysis in WiDr cell line lysates (35 μ g/lane). This demonstrates the CARD6 antibody detected the CARD6 protein (arrow).



Please note: All products are 'FOR RESEARCH USE ONLY. NOT FOR USE IN DIAGNOSTIC OR THERAPEUTIC PROCEDURES'.