

Ras Antibody

Rabbit mAb

Catalog # AP90445

Product Information

Application	WB, FC, IP
Primary Accession	P01111
Reactivity	Rat, Human, Mouse
Clonality	Monoclonal
Other Names	GTPase HRas;GTPase KRas;GTPase NRas;H-Ras-1;HAMSV;HRAS;HRAS1;K-RAS;N-RAS;NRAS;p21ras;RASH1;RASK2;Transforming protein p21
Isotype	Rabbit IgG
Host	Rabbit
Calculated MW	21229

Additional Information

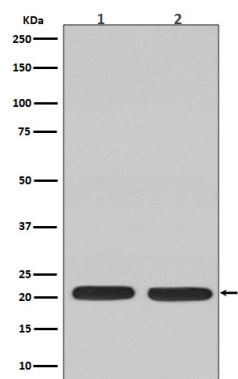
Dilution	WB 1:10000~1:20000 IP 1:20 FC 1:50
Purification	Affinity-chromatography
Immunogen	A synthesized peptide derived from human Ras
Description	HRas a small GTPase protein of the Ras family. Alternates between an inactive form bound to GDP and an active form bound to GTP. Activated by a guanine nucleotide-exchange factor (GEF) and inactivated by a GTPase-activating protein (GAP). Mutations are implicated in a variety of human tumors.
Storage Condition and Buffer	Rabbit IgG in phosphate buffered saline , pH 7.4, 150mM NaCl, 0.02% sodium azide and 50% glycerol. Store at +4°C short term. Store at -20°C long term. Avoid freeze / thaw cycle.

Protein Information

Name	NRAS
Synonyms	HRAS1
Function	Ras proteins bind GDP/GTP and possess intrinsic GTPase activity.
Cellular Location	Cell membrane; Lipid-anchor; Cytoplasmic side. Golgi apparatus membrane; Lipid-anchor Note=Shuttles between the plasma membrane and the Golgi apparatus

Images

Western blot analysis of Ras expression in (1) C6 cell lysate; (2) Jurkat cell lysate.



Please note: All products are 'FOR RESEARCH USE ONLY. NOT FOR USE IN DIAGNOSTIC OR THERAPEUTIC PROCEDURES'.