

GFAP Antibody

Rabbit mAb

Catalog # AP90451

Product Information

Application	WB, IHC, IF, ICC, IP, IHF
Primary Accession	P14136
Reactivity	Rat, Human, Mouse
Clonality	Monoclonal
Other Names	GFAP; FLJ45472; gfapI; ALXDRD; CB345;
Isotype	Rabbit IgG
Host	Rabbit
Calculated MW	49880

Additional Information

Dilution	WB 1:10000~1:50000 IHC 1:50~1:200 ICC/IF 1:50~1:200 IP 1:30
Purification	Affinity-chromatography
Immunogen	A synthesized peptide derived from human GFAP
Description	GFAP is commonly used as a marker for intracranial and intraspinal tumors arising from astrocytes. In addition, GFAP intermediate filaments are also present in nonmyelin-forming Schwann cells in the peripheral nervous system
Storage Condition and Buffer	Rabbit IgG in phosphate buffered saline , pH 7.4, 150mM NaCl, 0.02% sodium azide and 50% glycerol. Store at +4°C short term. Store at -20°C long term. Avoid freeze / thaw cycle.

Protein Information

Name	GFAP
Function	GFAP, a class-III intermediate filament, is a cell-specific marker that, during the development of the central nervous system, distinguishes astrocytes from other glial cells.
Cellular Location	Cytoplasm. Note=Associated with intermediate filaments
Tissue Location	Expressed in cells lacking fibronectin.

Images

Western blot analysis of GFAP expression in Rat brain lysate.

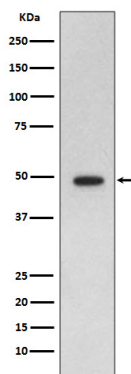


Image not found : 202311/AP90451-IHC.jpg

Immunohistochemical analysis of paraffin-embedded human glioma, using GFAP Antibody.

Image not found : 202311/AP90451-IF.jpg

Immunofluorescent analysis of SH-SY5Y cells, using GFAP Antibody .

Please note: All products are 'FOR RESEARCH USE ONLY. NOT FOR USE IN DIAGNOSTIC OR THERAPEUTIC PROCEDURES'.