

VCAM1 Antibody

Rabbit mAb

Catalog # AP90453

Product Information

Application	WB, IHC, IF, FC, ICC, IP, IHF
Primary Accession	P19320
Reactivity	Rat, Human, Mouse
Clonality	Monoclonal
Other Names	VCAM1; L1CAM; VCAM 1; V CAM 1; DKFZp779G2333; CD106;
Isotype	Rabbit IgG
Host	Rabbit
Calculated MW	81276

Additional Information

Dilution	WB 1:500~1:2000 IHC 1:50~1:200 ICC/IF 1:50~1:200 IP 1:20 FC 1:50
Purification	Affinity-chromatography
Immunogen	A synthesized peptide derived from human VCAM1
Description	This gene is a member of the Ig superfamily and encodes a cell surface sialoglycoprotein expressed by cytokine-activated endothelium. This type I membrane protein mediates leukocyte-endothelial cell adhesion and signal transduction, and may play a role in the development of atherosclerosis and rheumatoid arthritis. Two alternatively spliced transcripts encoding different isoforms have been described for this gene. Tissue specificity:
Storage Condition and Buffer	Rabbit IgG in phosphate buffered saline , pH 7.4, 150mM NaCl, 0.02% sodium azide and 50% glycerol. Store at +4°C short term. Store at -20°C long term. Avoid freeze / thaw cycle.

Protein Information

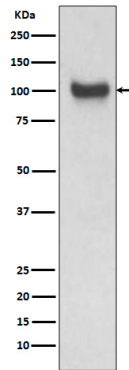
Name	VCAM1
Function	Cell adhesion glycoprotein predominantly expressed on the surface of endothelial cells that plays an important role in immune surveillance and inflammation (PubMed: 31310649). Acts as a major regulator of leukocyte adhesion to the endothelium through interaction with different types of integrins (PubMed: 10209034). During inflammatory responses, binds ligands on the surface of activated endothelial cells to initiate the activation of calcium channels and the plasma membrane-associated small GTPase RAC1 leading to leukocyte transendothelial migration (PubMed: 22970700). Also serves as a quality- control checkpoint for entry into bone marrow by providing a 'don't- eat-me' stamping in the context of major histocompatibility complex (MHC) class-I presentation (PubMed: 35210567).
Cellular Location	[Vascular cell adhesion protein 1]: Cell membrane; Single-pass type I

membrane protein

Tissue Location

Expressed on inflamed vascular endothelium, as well as on macrophage-like and dendritic cell types in both normal and inflamed tissue

Images



Western blot analysis of VCAM1 expression in Mouse kidney lysate.

Image not found : 202311/AP90453-IHC.jpg

Immunohistochemical analysis of paraffin-embedded human tonsil, using VCAM1 Antibody.

Image not found : 202311/AP90453-IF.jpg

Immunofluorescent analysis of K562 cells, using VCAM1 Antibody .

Please note: All products are 'FOR RESEARCH USE ONLY. NOT FOR USE IN DIAGNOSTIC OR THERAPEUTIC PROCEDURES'.