

PUMA Antibody

Rabbit mAb

Catalog # AP90463

Product Information

Application	WB, IHC, IF, FC, ICC, IHF
Primary Accession	Q9BXH1
Reactivity	Rat, Human, Mouse
Clonality	Monoclonal
Other Names	BBC3; bcl2 binding component 3; jfy1; puma; p53 up-regulated modulator of apoptosis; PUMA alpha;
Isotype	Rabbit IgG
Host	Rabbit
Calculated MW	20532

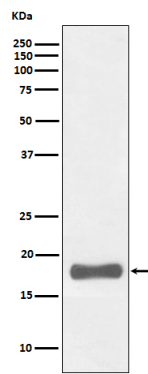
Additional Information

Dilution	WB 1:500~1:2000 IHC 1:50~1:200 ICC/IF 1:50~1:200 FC 1:50
Purification	Affinity-chromatography
Immunogen	A synthesized peptide derived from human PUMA
Description	Essential mediator of p53/TP53-dependent and p53/TP53-independent apoptosis. Functions by promoting partial unfolding of BCL2L1 and dissociation of BCL2L1 from p53/TP53. Regulates ER stress-induced neuronal apoptosis.
Storage Condition and Buffer	Rabbit IgG in phosphate buffered saline , pH 7.4, 150mM NaCl, 0.02% sodium azide and 50% glycerol. Store at +4°C short term. Store at -20°C long term. Avoid freeze / thaw cycle.

Protein Information

Name	BBC3
Synonyms	PUMA
Function	Essential mediator of p53/TP53-dependent and p53/TP53- independent apoptosis (PubMed: 11463391 , PubMed: 23340338). Promotes partial unfolding of BCL2L1 and dissociation of BCL2L1 from p53/TP53, releasing the bound p53/TP53 to induce apoptosis (PubMed: 23340338). Regulates ER stress-induced neuronal apoptosis (By similarity).
Cellular Location	Mitochondrion Note=Localized to the mitochondria in order to induce cytochrome c release
Tissue Location	Ubiquitously expressed.

Images



Western blot analysis of PUMA expression in K562 cell lysate.

Image not found : 202311/AP90463-IHC.jpg

Immunohistochemical analysis of paraffin-embedded human breast cancer, using PUMA Antibody.

Image not found : 202311/AP90463-IF.jpg

Immunofluorescent analysis of Hela cells, using PUMA Antibody .

Please note: All products are 'FOR RESEARCH USE ONLY. NOT FOR USE IN DIAGNOSTIC OR THERAPEUTIC PROCEDURES'.