

# Stathmin 1 Antibody

Rabbit mAb

Catalog # AP90464

## Product Information

<b>Application</b>	WB, IHC, IF, FC, ICC, IP, IHF
<b>Primary Accession</b>	<a href="#">P16949</a>
<b>Reactivity</b>	Rat, Human, Mouse
<b>Clonality</b>	Monoclonal
<b>Other Names</b>	LAG; LAP18; Leukemia-associated gene protein; Metablastin; Oncoprotein 18; Op18; Phosphoprotein p19; pp17; pp19; PR22; Pr22 protein; Prosolin;SMN;Stathmin1;STMN1;
<b>Isotype</b>	Rabbit IgG
<b>Host</b>	Rabbit
<b>Calculated MW</b>	17303

## Additional Information

<b>Dilution</b>	WB 1:500~1:2000 IHC 1:50~1:100 ICC/IF 1:50~1:100 IP 1: 50 FC 1:50
<b>Purification</b>	Affinity-chromatography
<b>Immunogen</b>	A synthesized peptide derived from human Stathmin 1
<b>Description</b>	Involved in the regulation of the microtubule (MT) filament system by destabilizing microtubules. Prevents assembly and promotes disassembly of microtubules. Phosphorylation at Ser-16 may be required for axon formation during neurogenesis. Involved in the control of the learned and innate fear.
<b>Storage Condition and Buffer</b>	Rabbit IgG in phosphate buffered saline , pH 7.4, 150mM NaCl, 0.02% sodium azide and 50% glycerol. Store at +4°C short term. Store at -20°C long term. Avoid freeze / thaw cycle.

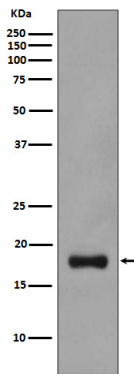
## Protein Information

<b>Name</b>	STMN1
<b>Synonyms</b>	C1orf215, LAP18, OP18
<b>Function</b>	Involved in the regulation of the microtubule (MT) filament system by destabilizing microtubules. Prevents assembly and promotes disassembly of microtubules. Phosphorylation at Ser-16 may be required for axon formation during neurogenesis. Involved in the control of the learned and innate fear (By similarity).
<b>Cellular Location</b>	Cytoplasm, cytoskeleton.
<b>Tissue Location</b>	Ubiquitous. Expression is strongest in fetal and adult brain, spinal cord, and cerebellum, followed by thymus, bone marrow, testis, and fetal liver. Expression is intermediate in colon, ovary, placenta, uterus, and trachea, and

is readily detected at substantially lower levels in all other tissues examined. Lowest expression is found in adult liver. Present in much greater abundance in cells from patients with acute leukemia of different subtypes than in normal peripheral blood lymphocytes, non-leukemic proliferating lymphoid cells, bone marrow cells, or cells from patients with chronic lymphoid or myeloid leukemia.

## Images

---



Western blot analysis of Stathmin 1 expression in PC-12 cell lysate.

Image not found : 202311/AP90464-IHC.jpg

Immunohistochemical analysis of paraffin-embedded human colon, using Stathmin 1 Antibody.

Please note: All products are 'FOR RESEARCH USE ONLY. NOT FOR USE IN DIAGNOSTIC OR THERAPEUTIC PROCEDURES'.